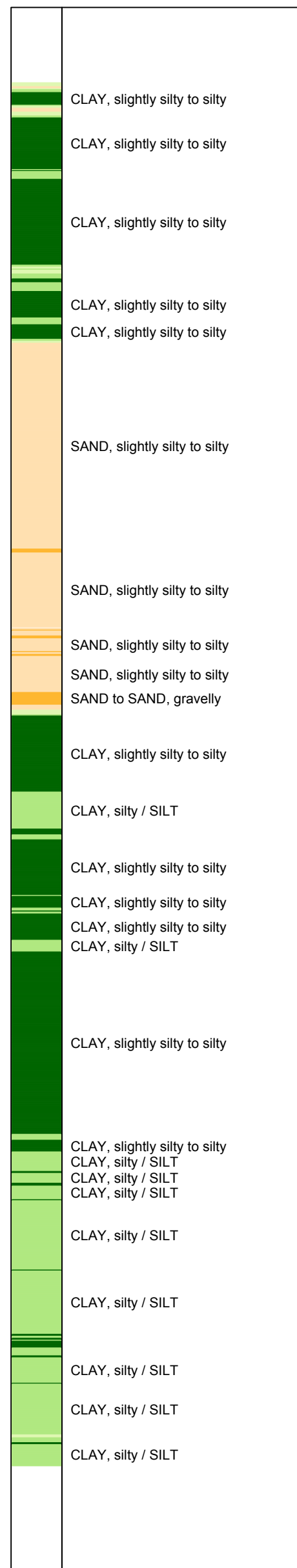


**Indicative soil classification**  
 Automatically generated from CPT data  
 Valid below groundwater level  
 (Robertson 1990, NL corr.)

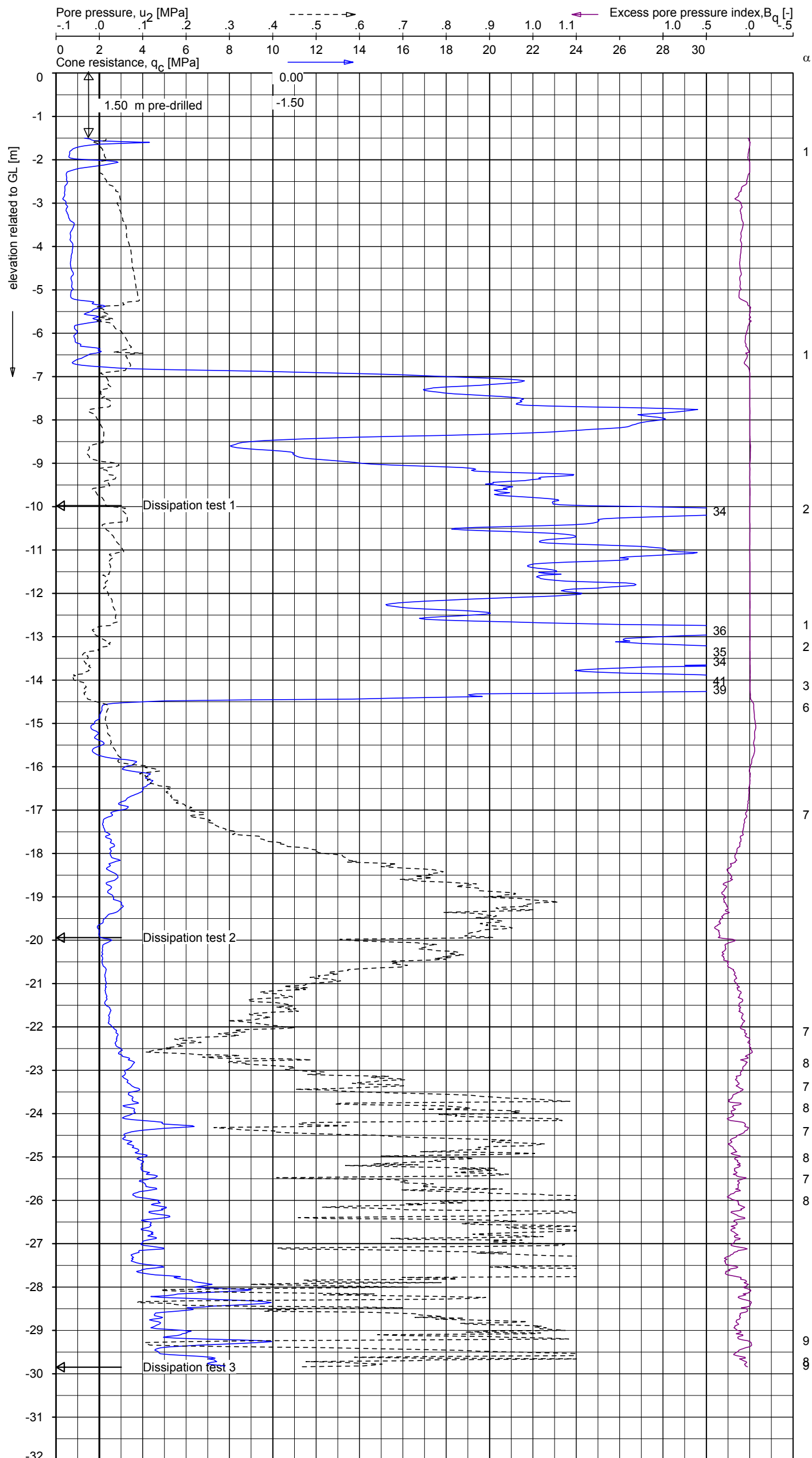


Rec.: DMB/PJW d.d. 09-Feb-2017 Coord.: X= m Y= m System: RD Test in accordance with NEN-EN-ISO 22476-1  
 Proc.: K.STASSEN d.d. 12-Oct-2017 Cone: CP15-CF75PB1SN2 1701-0509 Class 2 Test type TE2  
 Cone type:  $A_c = 1510 \text{ mm}^2$ ;  $A_s = 19895 \text{ mm}^2$

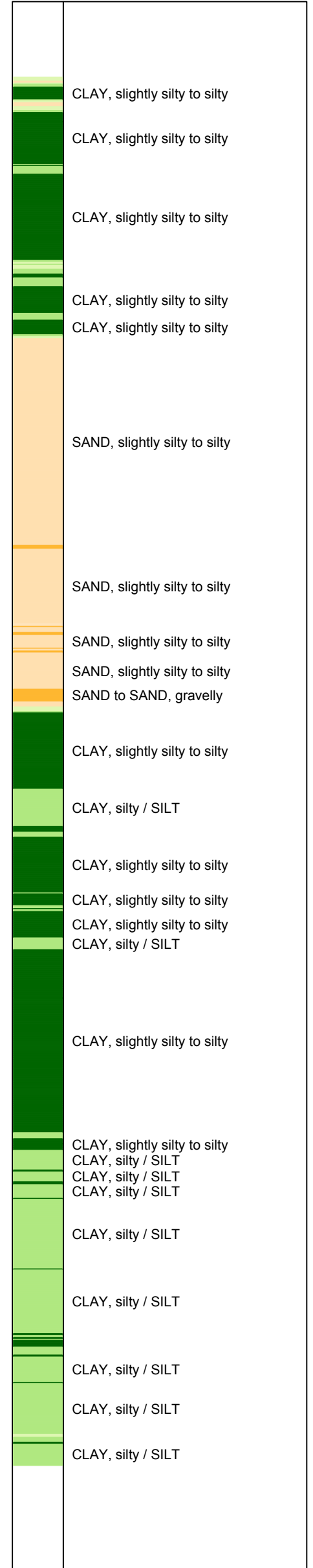
**CONE PENETRATION TEST WITH LOCAL FRICTION**

Nouvelle station Constitution

Proj. C102420  
 Cpt CPTU-M10



**Indicative soil classification**  
 Automatically generated from CPT data  
 Valid below groundwater level  
 (Robertson 1990, NL corr.)



Rec.: DMB/PJW    d.d. 09-Feb-2017    Coord.: X=    m    Y=    m    System: RD    Test in accordance with NEN-EN-ISO 22476-1  
 Proc.: K.STASSEN    d.d. 12-Oct-2017    Cone: CP15-CF75PB1SN2    1701-0509    Class 2.    Test type TE2  
 Cone type:  $A_c = 1510 \text{ mm}^2$ ;  $A_s = 19895 \text{ mm}^2$

**PIEZO CONE PENETRATION TEST**

Nouvelle station Constitution

Proj. C102420  
 Cpt CPTU-M10