

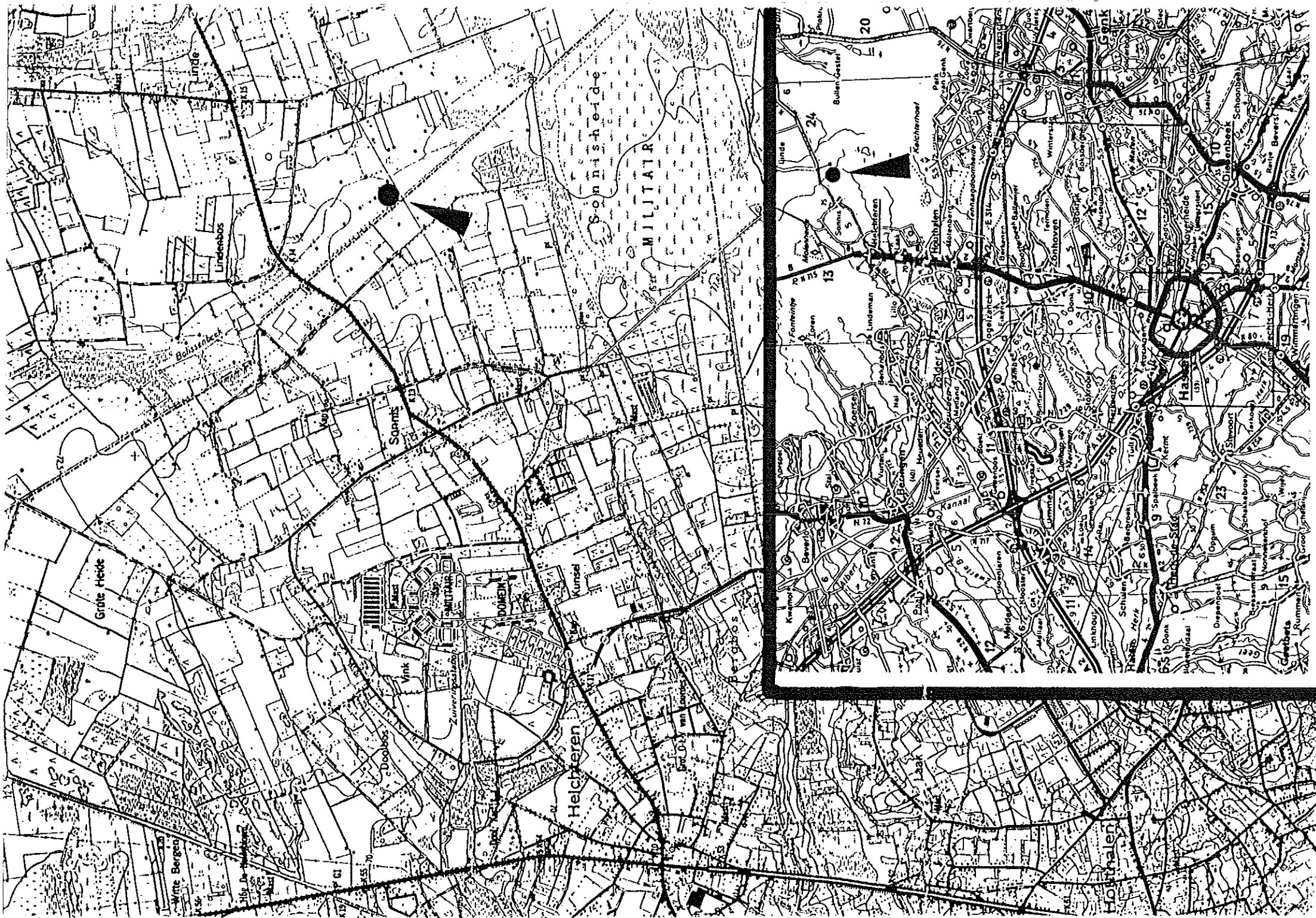
Boring Pe  
KB 206

570	569	Grijs krijt en glauconiethoudend krijt; mergelig; zwarte silex.
575	571.8	Idem
580	576.5	Idem
585	583.3	Idem
590	587.5	Grijze zandige mergel met ligniet
595	592.8	Brokjes grijs krijt.
600	596.7	Idem
605	600.5	Groengrijze fijnzandige mergel. Brokjes krijt, silex en ligniet.
610	605.5	Groengrijs mergelig krijt. Brokjes silex en klei.
615	610.3	Grijs krijt; wat glauconiet Microfossielen, brokjes klei.
620	615	Idem
625	619.7	Groengrijs mergelig krijt
630	624.3	Grijs krijt; wat glauconiet en schelpen Brokjes silex en klei.
635	628.7	Groengrijs krijt; kwartskorrels Een beetje fossielgruis
640	631.6	Groengrijs krijt; kwartskorrels Fossielgruis
645	634.8	Groengrijs zandig krijt; kwartskorrels Fossielgruis, microfossielen
650	640.5	Idem
655	646.1	Idem
660	652	Groengrijze mergel met kwartzand.
665	660	Groengrijs glauconiethoudend zand en grijze mergel. Een beetje krijt, silex en klei.
670	661.2	Idem
675	666.5	Grijze mergel met een beetje grof zand. Zandkorrels hebben soms roestbruine coating.
680	678	Idem, meer zand. Een beetje ligniet, zwarte silex, krijt, schelpen; een belemnietfragment
685	679.5	Roestbruin grof zand met grijze mergel. Ligniet, schelp- en silexfragmenten.
690	686	Idem.
695	688.8	Roestbruin grof zand met grijze mergel. Ligniet en silexfragmenten. Zeer grof zand met grijze mergel. Enkele zwarte silexbrokjes.

700	693.3	Zeer grof zand; enkele brokjes groene glauconietrijke zandsteen.
705	698.3	Grijze, rode en bruine zandsteen.
710	706	Verbrokkeld tot zand? Witte kwarts.
		Idem
715	707.5	Idem
720	708.8	Idem
725	716.8	Idem
730	726.1	Roestbruin zand en zandsteen.
		Witte kwarts.

----- FASE 6 1/4" -----

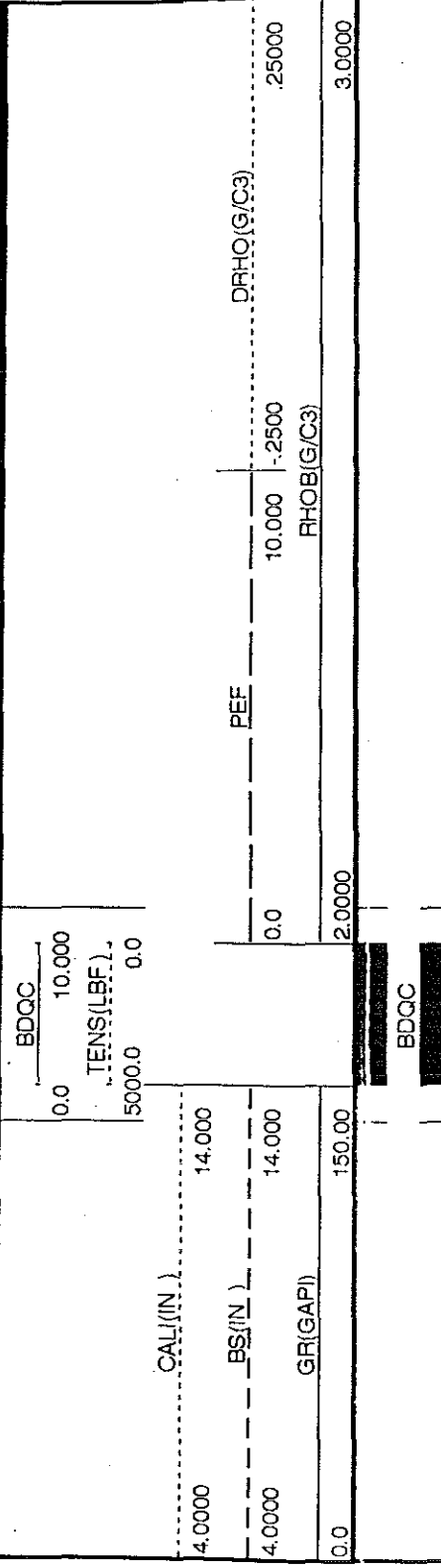
735	734.7	Gel, rubber van cementplug Cement en grijze zandsteen.
740	738.7	Grijze en roodbruine zandsteen
		Rode klei
745	741.5	Grijze en een weinig rode zandsteen
750	747	Idem
755	754	Grijze en rode zandsteen
760	758.5	Rode en grijze zandsteen
765	764.2	Idem
770	768.5	Idem
775	774	Idem
780	779	Grijze en rode zandsteen
		Rode schiefers
785	784	Idem
790	789.2	Idem
795	794	Idem
800	799	Idem
805	804	Grijze zandsteen
810	809.2	Zwarte schiefers vanaf 809 m
		Grijze en rode zandsteen
815	814.2	Zwarte schiefers, een weinig grijze en rode zandsteen
820	819.5	Idem
825	824	Idem



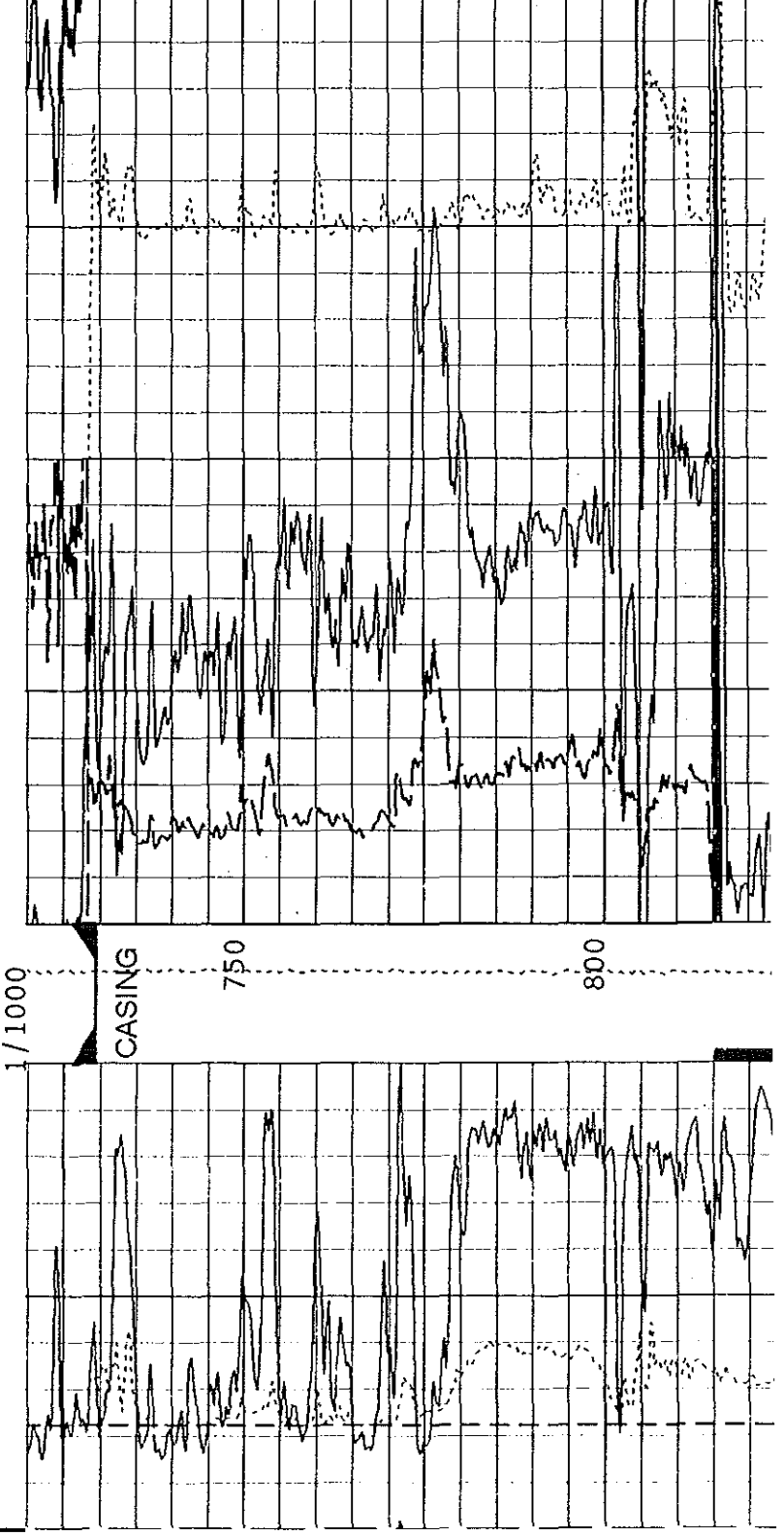
LDL-GR  
PEER KB206

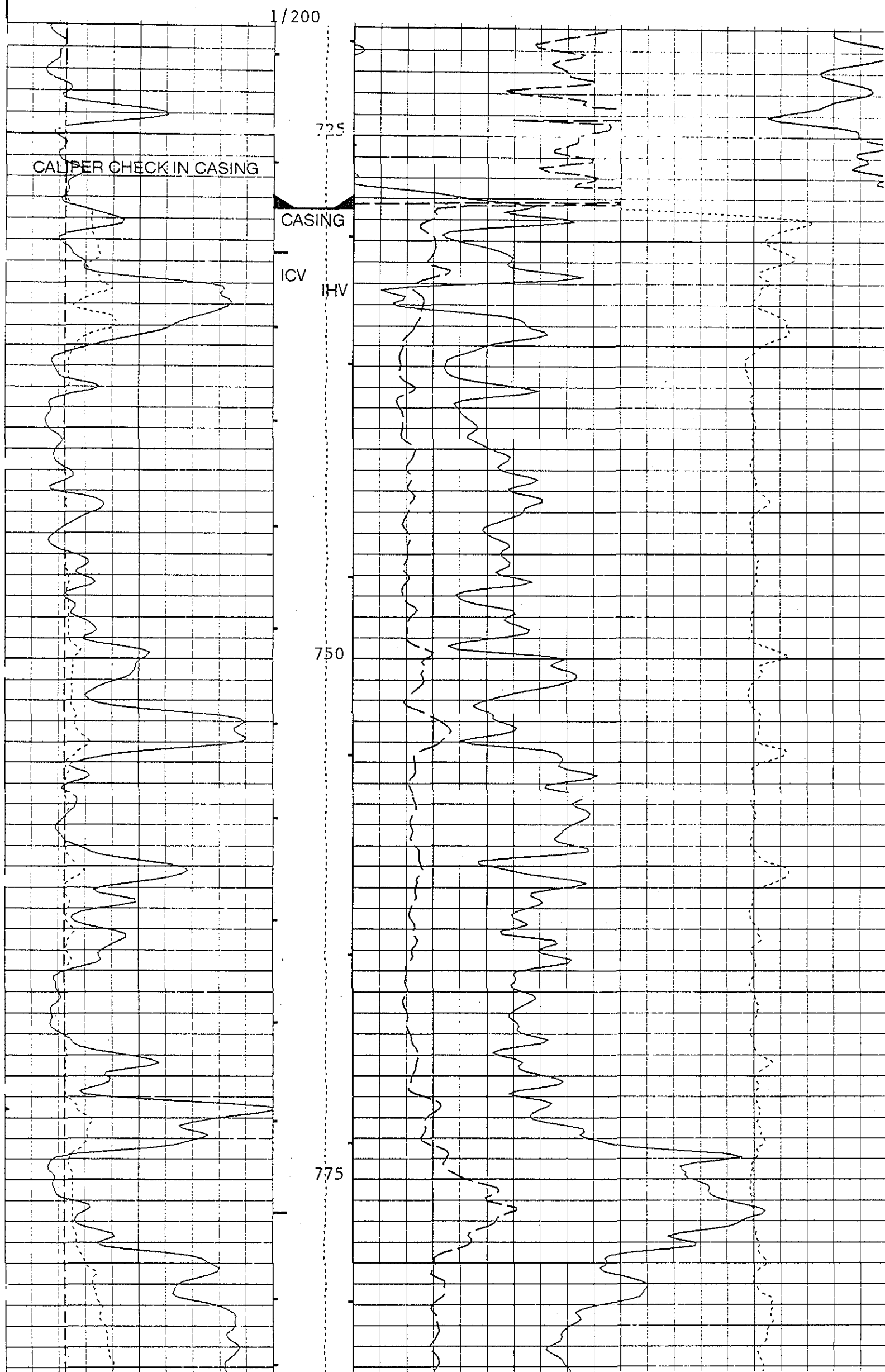
COMPANY	BELGISCHE GEOLOGISCHE DIENST		
WELL	PEER KB206		
FIELD	KEMPEN		
COUNTRY:	BELGIUM	RIG:	R-28
LOCATION	X:224825,77 Y:196069,08	Other Services: DIL-AS-GR FMS-GR RFT-GR	
SERIAL NO.	SECT.	TWP.	RANGE
Measurement Datum	GROUND LEVEL	Elev.	Elev.: K.B.
Measured From	G.L.	4.2 M	above Perm. Datum
Measured From	G.L.		D.F.4.2 M G.L.
Date	07-OCT-1992		
Driller	2		
Driller	1348.0 M		
Logger (Schl.)	1346.5 M		
Interval	1345.5 M		
Interval	728.5 M		
Driller	273 MM. @ 90.0 M	7"	@ 730.0 M
Logger	90.0 M	728.5 M	@
Driller	350 MM. @ 90.0 M	8.5"	@ 732.0 M
Logger		6.25"	@ 1348.0 M
Fluid in Hole	BENTONITE CMC		
Visc.	1.11 G/C3	45.0 S	
Fld. Loss	10.5	9.5 C3	
Flow Sample	FLOWLINE		
Res. Temp.	1.020 OHMM	@ 17.0 DEGC	@
Res. Temp.	.950 OHMM	@ 17.0 DEGC	@
Res. Temp.	1.100 OHMM	@ 17.0 DEGC	@
Rmf   Rmc	PRESS	PRESS	@
RT	.574 OHMM	@ 47.0 DEGC	@
Operation Ended	06:00 (7-10)		
Arrival on Bottom	21:00 (7-10)		
Temp.	47.0 DEGC		
Location	906	HOT (ASSEN)	
By	M. PROPPER		
Checked By	M. DUSAR / S.F. LIE		

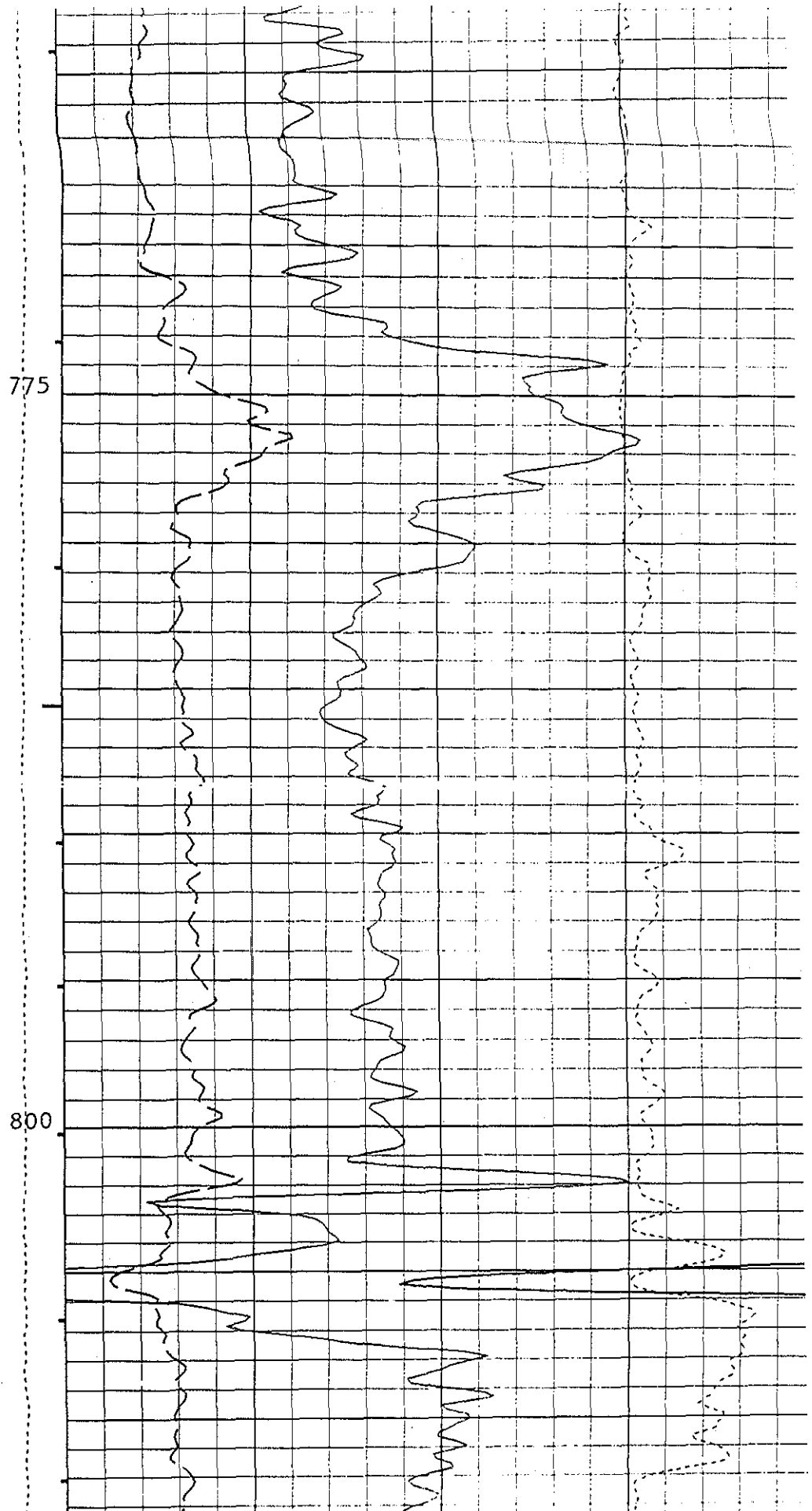
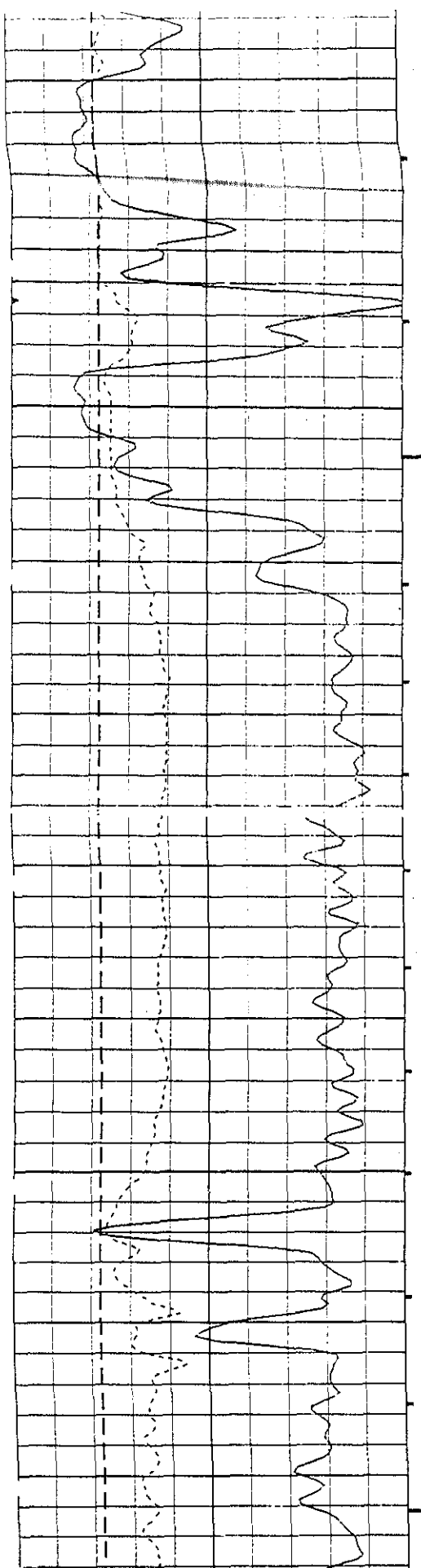
The well name, location and borehole reference data were furnished by the customer.



CP 32.6  
FILE 19  
07-OCT-1992 22:37  
INPUT FILE(S) 13  
CREATION DATE 07-OCT-1992 20:49







775

800

CP 32.6

FILE 20

07-OCT-1992 22:38

INPUT FILE(S)  
12

CREATION DATE  
07-OCT-1992 20:39

		BDQC			
		BDQC			
		0.0	10.000		
		TENS(LBF)			
		5000.0	0.0		
CALI(IN )					
4.0000	14.000				
BS(IN )					
4.0000	14.000				
GR(GAP)					
0.0	150.00				
		PEF		DRHO(G/C3)	
		0.0	10.000	-2500	25000
		RHOB(G/C3)			
		2.0000			3.0000

SENSOR MEASURE POINT TO TOOL ZERO

# DIL-ARRAY SONIC-GR PEER KB206

**Schlumberger**

COUNTRY BELGIUM	FIELD KEMPTEN	LOCATION X:224825.77 Y:196069.08	WELL PEER KB206	COMPANY BELGISCHE GEOLOGISCHE DIENST	<b>COMPANY</b> BELGISCHE GEOLOGISCHE DIENST <b>WELL</b> PEER KB206 <b>FIELD</b> KEMPEN <b>COUNTRY</b> BELGIUM <b>RIG:</b> R-28
API SERIAL NO.		SECT.	TWP.	RANGE	Other Services: LDL-GR FMS-GR RFT-GR
Permanent Datum     GROUND LEVEL     Elev.     Elev.: K.B. Log Measured From     G.L.     0.0 M     above Perm. Datum     D.F.4.2 M Drilling Measured From     G.L.     G.L.					
Date	07-OCT-1992				
Run No.	1				
Depth Driller	1348.0 M				
Depth Logger (Schl.)	1346.5 M				
Btm. Log Interval	1344.5 M				
Top Log Interval	728.5 M				
Casing-Driller	273 MM. @ 90.0 M	7" @ 730.0 M	@		
Casing-Logger	90.0 M	728.5 M			
Bit Size	350 MM. @ 90.0 M	8.5" @ 732.0 M	6.25" @ 1348.0 M		
Type Fluid In Hole	BENTONITE CMC				
Dens.	Visc.	1.11 G/C3	45.0 S		
pH	Fld. Loss	10.5	9.5 C3		
Source of Sample	FLOWLINE				
Rm @ Meas. Temp.	1.020 OHMM @ 17.0 DEGC	@			
Rmf @ Meas. Temp.	.930 OHMM @ 17.0 DEGC	@			
Rmc @ Meas. Temp.	1.100 OHMM @ 17.0 DEGC	@			
Source: Rmf	Rmc	PRESS	PRESS		
Rm @ BHT	.574 OHMM @ 47.0 DEGC	@			
Circulation Ended	06:00 (7-10)				
Logger on Bottom	16:44 (7-10)				
Max. Rec. Temp.	47.0 DEGC				
Equip.	Location	906	HOT (ASSEN)		
Recorded By	M. PROPPER				
Witnessed By	DUSAR / S.F. LIE				

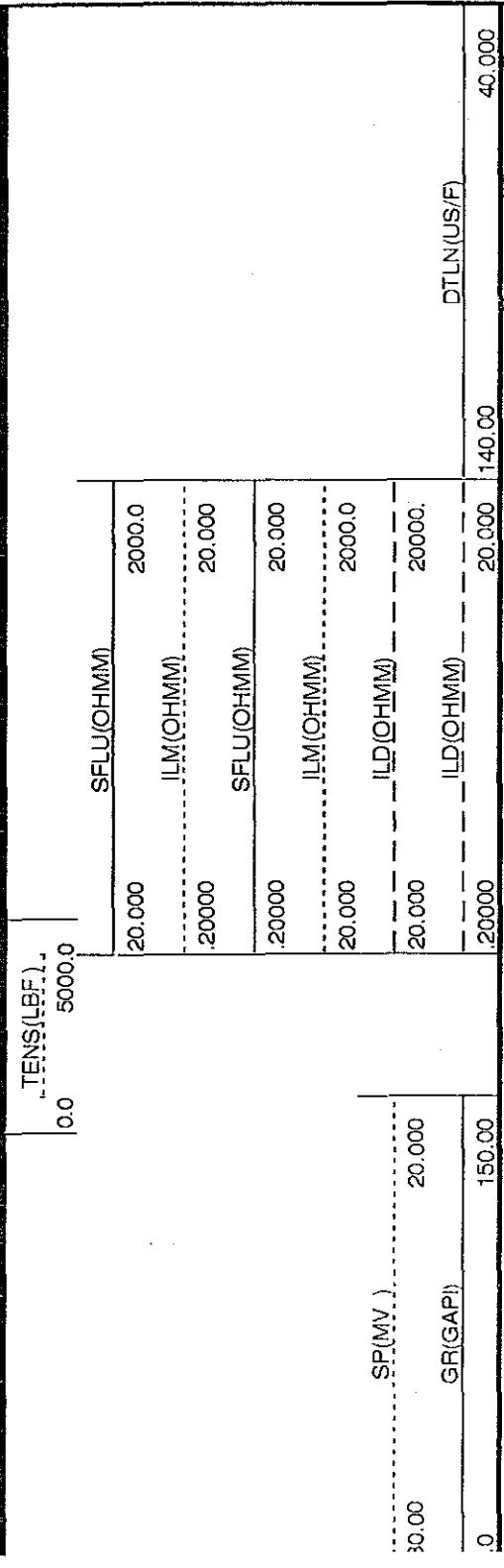
The well name, location and borehole reference data were furnished by the customer.

**EVENT MARK SUMMARY:**

OUTPUT

INTERVAL DEPTH TRACK  
BETWEEN PIPS EDGE

Integrated Transit Time .00100000 S LEFT EDGE



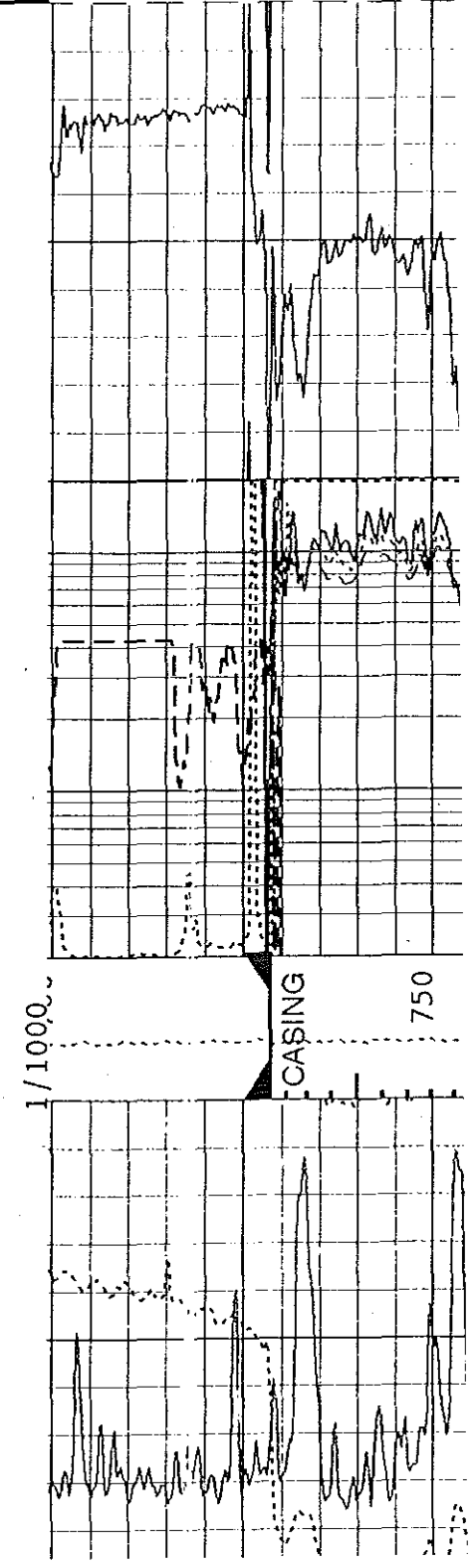
CP 32.6

FILE 11

07-OCT-1992 19:49

INPUT FILE(S) 7

CREATION DATE 07-OCT-1992 17:42



0.0	GR(GAPI)	20.000	ILD(OHMM)	20.000	DTLN(US/F)	40.000
150.00				140.00		

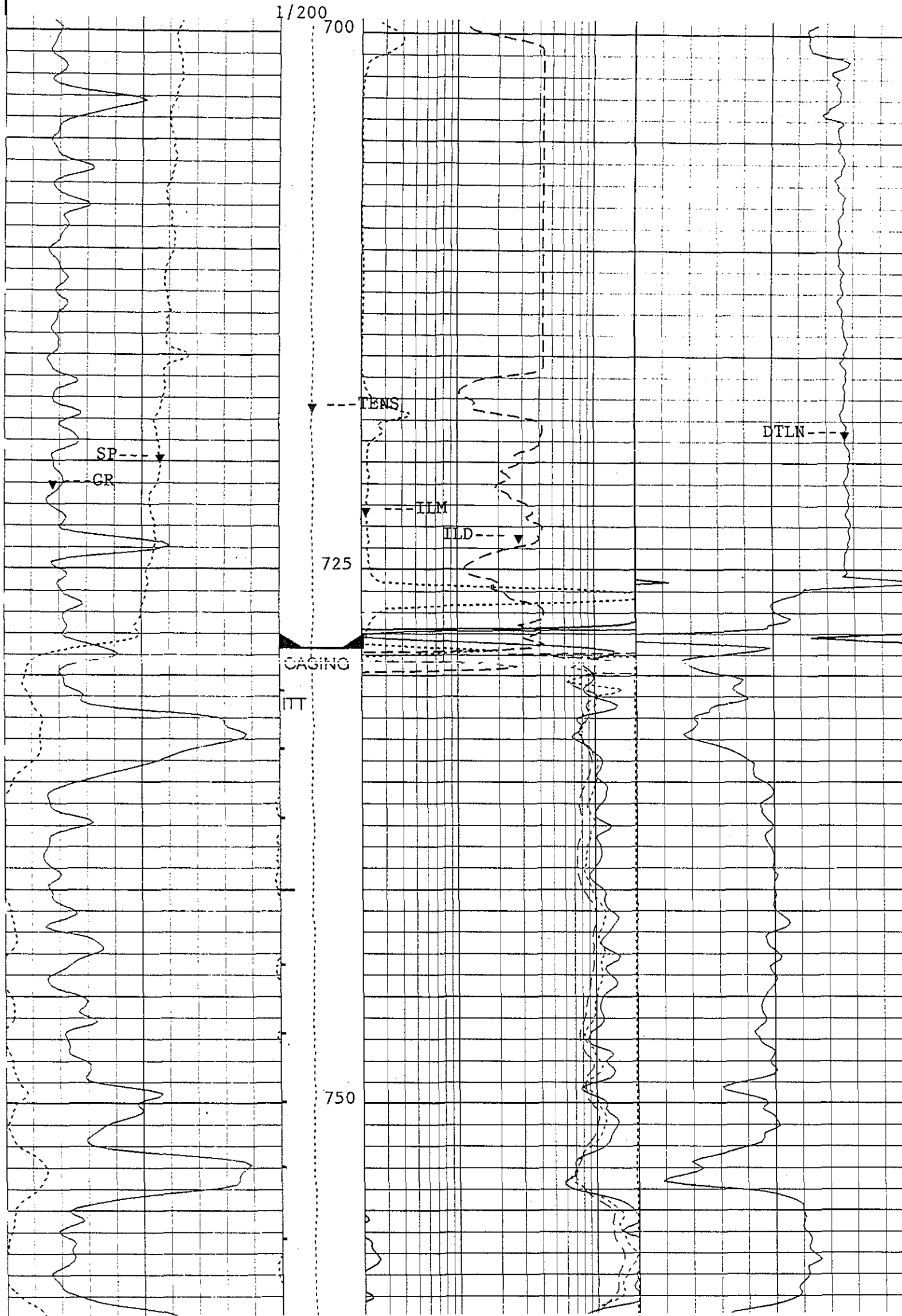
CP 32.6

FILE 11

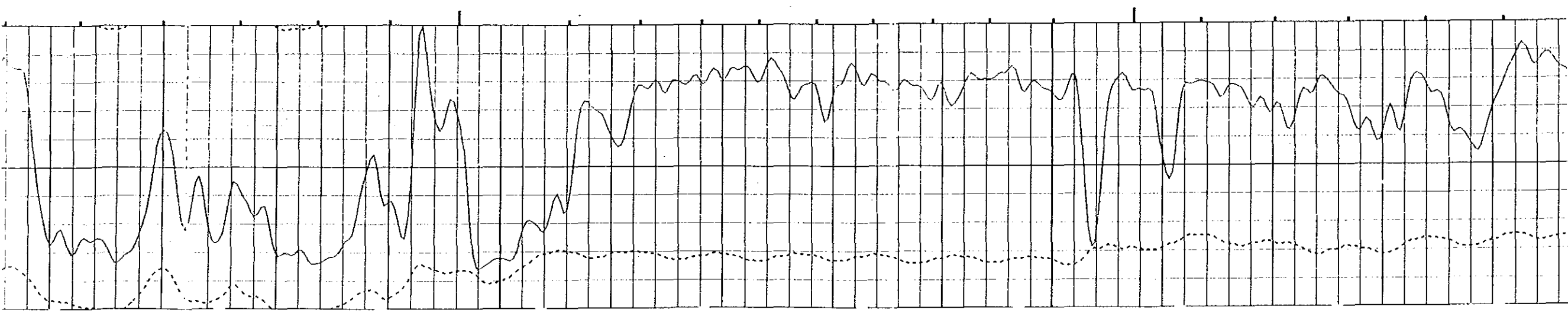
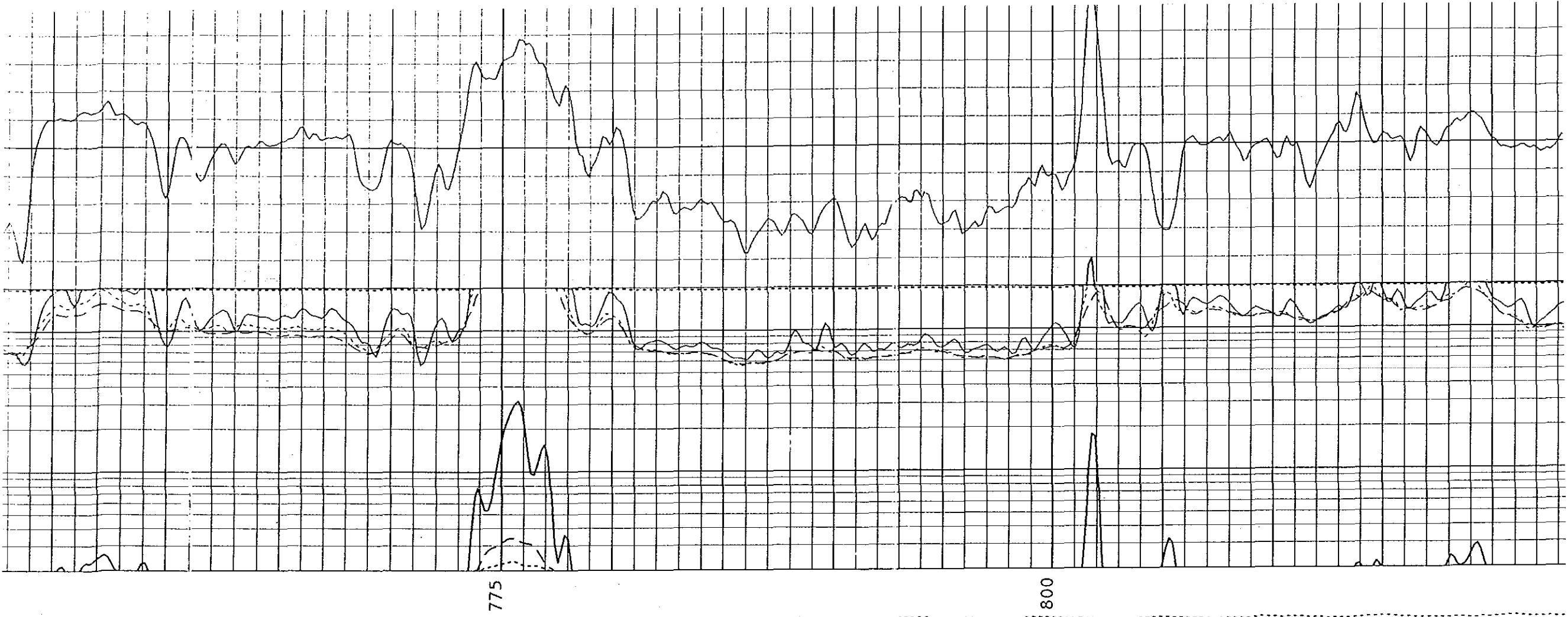
07-OCT-1992 19:49

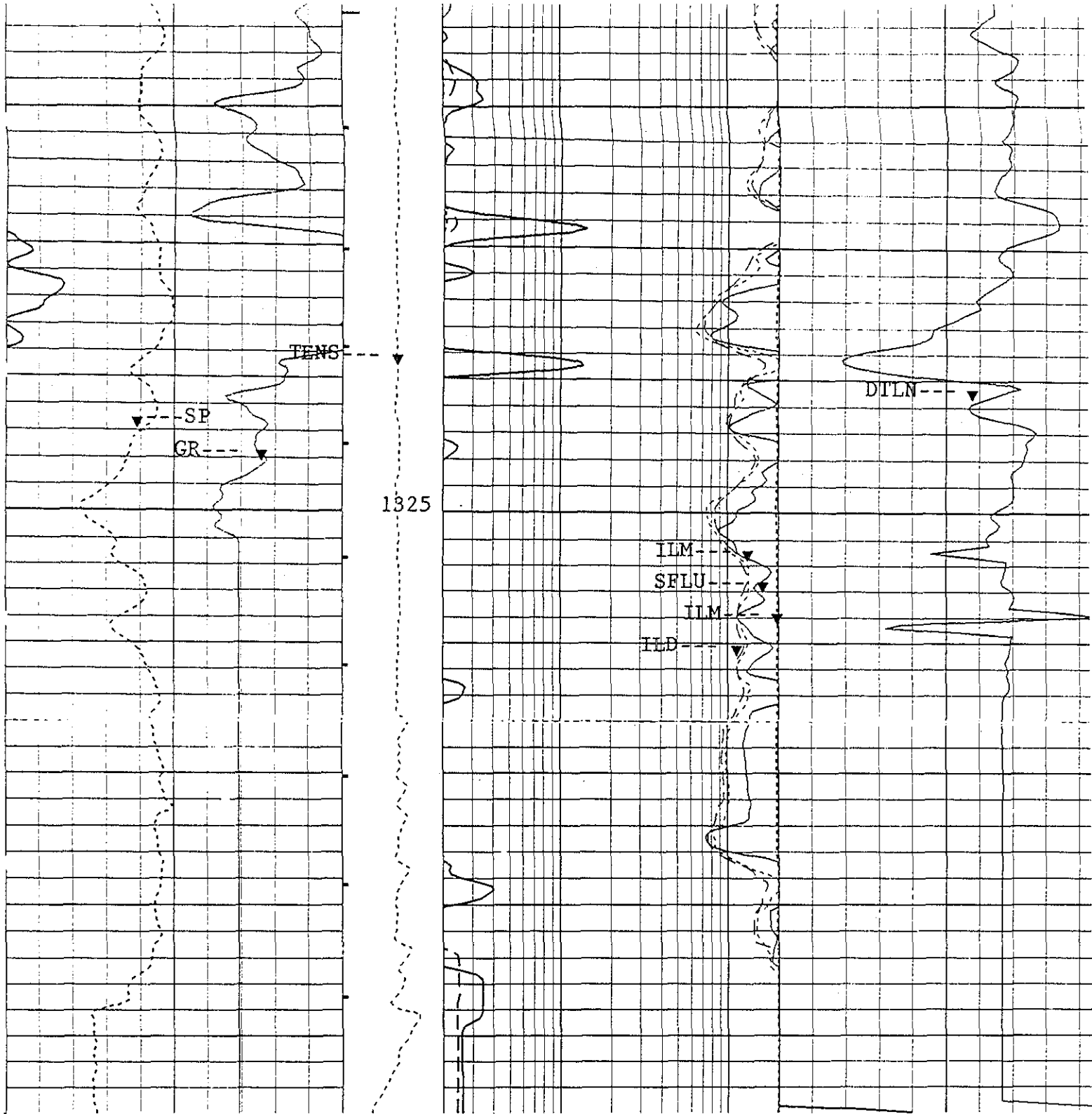
INPUT FILE(S)  
7

CREATION DATE  
07-OCT-1992 17:42









1/200

CP 32.6 FILE 2 08-OCT-1992 08:25  
 INPUT FILE(S) 6 CREATION DATE 07-OCT-1992 17:31

		TENS(LBF.)			
		0.0	5000.0		
				SFLU(OHMM)	
		20.000		2000.0	
				ILM(OHMM)	
		.20000		20.000	
				SFLU(OHMM)	
		.20000		20.000	
				ILM(OHMM)	
		20.000		2000.0	
				ILD(OHMM)	
		20.000		20000.	
				ILD(OHMM)	
		.20000		20.000	
SP(MV)		20.000			
-80.00				DTLN(US/F)	
GR(GAPI)		150.00		140.00	40.000
0.0					

SENSOR MEASURE POINT TO TOOL ZERO

SPAR .76 METER	SP .76 METER
MRES 25.65 METER	MTEM 25.65 METER
LTT4 13.77 METER	GR 22.83 METER
LTT2 14.07 METER	LTT3 14.07 METER
TT4 13.00 METER	LTT1 14.38 METER
TT2 13.31 METER	TT3 13.31 METER
MTT 17.45 METER	TT1 13.61 METER
TTM 1.85 METER	TT2 2.02 METER

DIL-BHC(SONIC)-GR  
PEER KB206

COMPANY BELGISCHE GEOLOGISCHE DIENST  
WELL PEER KB206  
FIELD KEMPEN  
COUNTRY BELGIUM RIG: R-28

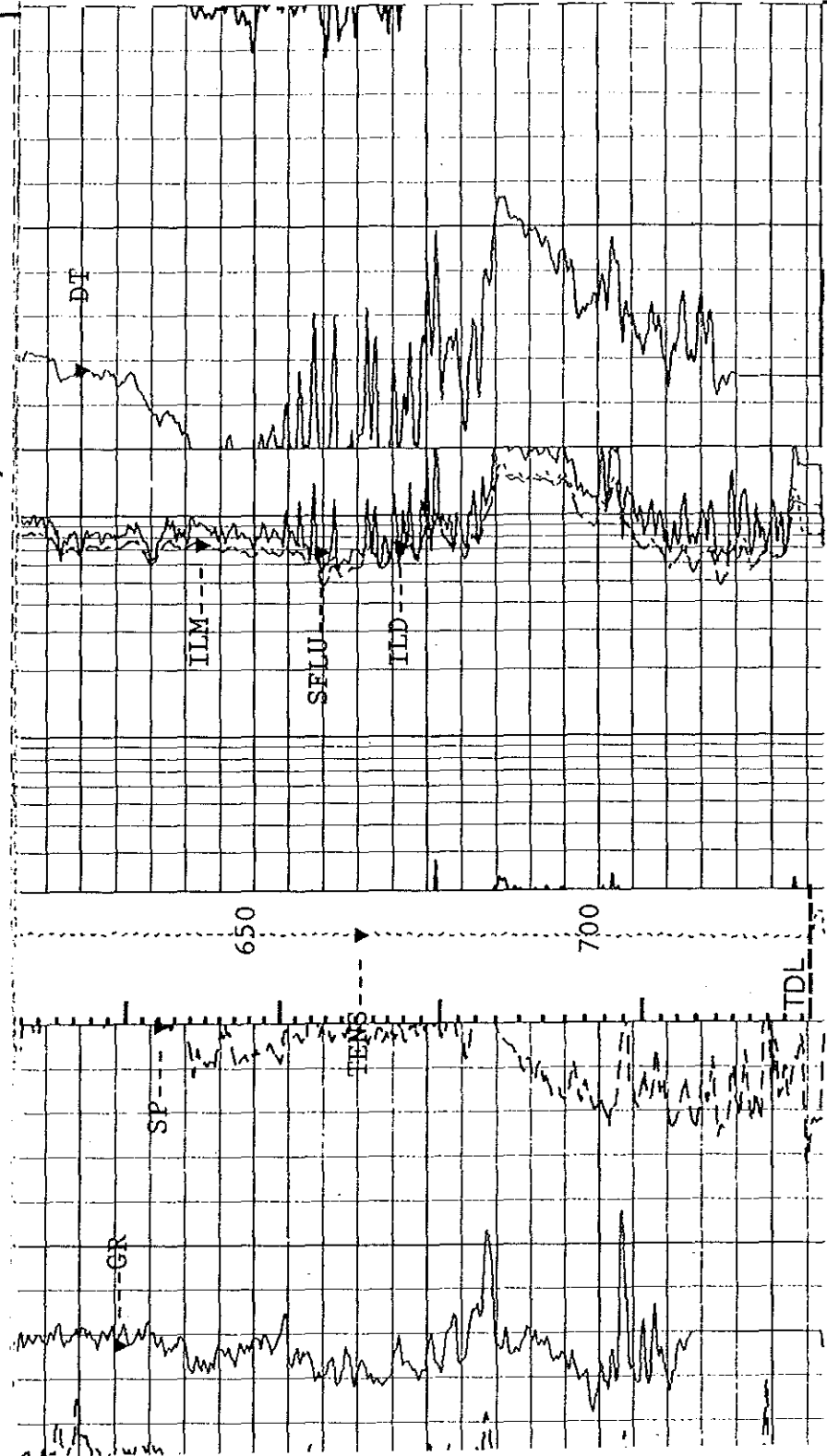
LOCATION X:224825,77 Y:196069,08  
Other Services: BGT-GR

API SERIAL NO. SECT. TWP. RANGE

Permanent Datum GROUND LEVEL Elev. Elev.: K.B.  
Log Measure From G.L. 4.2 M above Perm. Datum D.F.4.2 M  
Drilling Meas. Started From G.L. G.L.

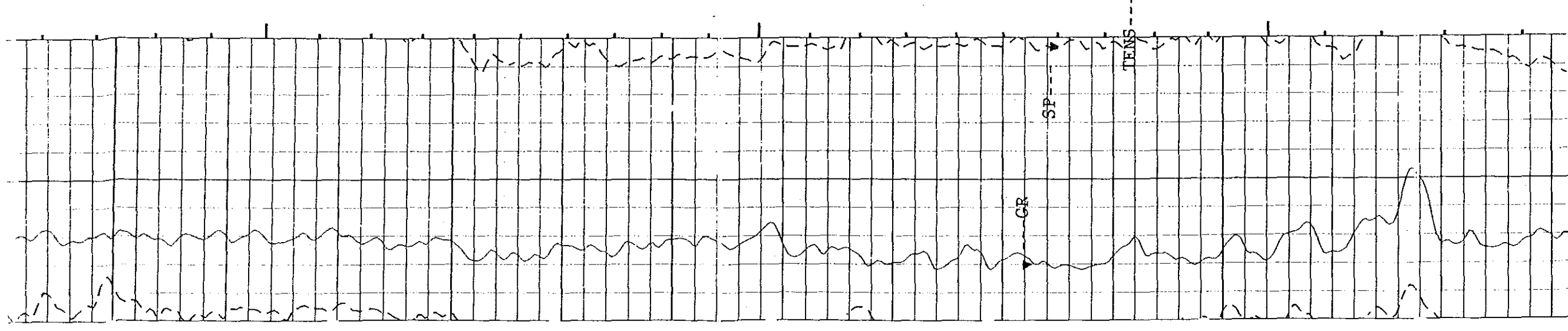
Date	09-SEP-1992		
Run No.	2		
Depth Driller	732.0 M		
Depth Logger (Schl.)	730.0 M		
Btm. Log Interval	727.0 M		
Top Log Interval	90.0 M		
Casing-Driller	273 MM. @ 90.0 M	@	@
Casing-Logger	90.0 M		
Bit Size	350 MM. @ 90.0 M	8.5" @ 732.0 M	@
Type Fluid in Hole	BENTONITE CMC		
Dens.	Visc.	1.22 G/C3	47.0 S
pH	Fid. Loss	9.5	8.0 C3
Source of Sample	FLOWLINE		
Rm @ Meas. Temp.	6.040 OHMM @ 18.0 DEGC	@	@
Rmf @ Meas. Temp.	5.890 OHMM @ 18.0 DEGC	@	@
Rmc @ Meas. Temp.	6.310 OHMM @ 18.0 DEGC	@	@
Source: Rmf	Rmc	PRESS	PRESS
Rm @ BHT	4.824 OHMM @ 28.0 DEGC	@	@
Circulation Ended	13:00 (9-9)		
Logger on Bottom	18:09 (9-9)		
Max. Rec. Temp	28.0 DEGC		
Equip.	Location	906	HOT (ASSEN)
Recorded By	M. PROPPER		
Witnessed By	DUSAR / S.F. LIE		

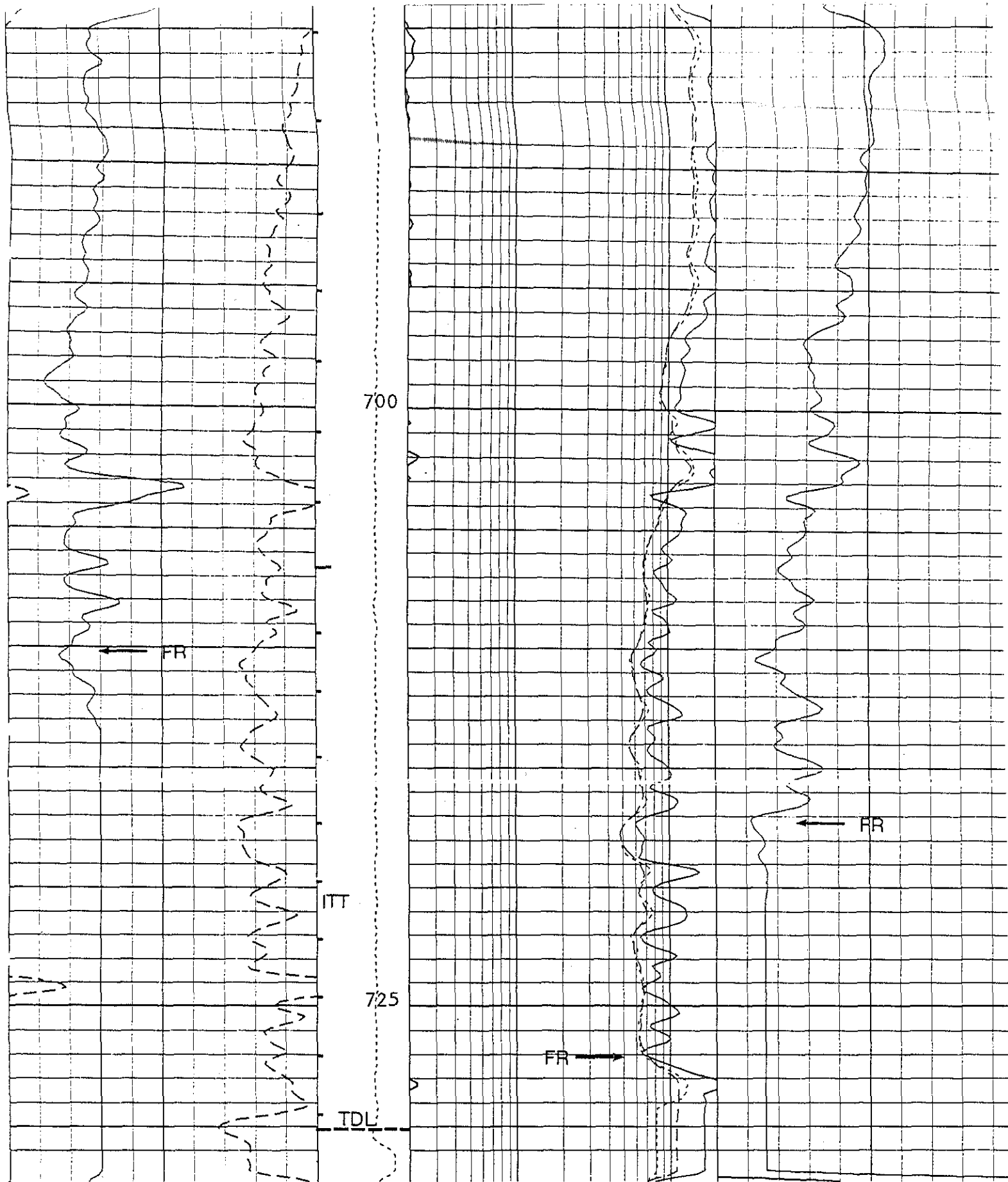
The well name, location and borehole reference data were furnished by the customer.



CP 32.6 FILE 21 09-SEP-1992 19:58  
INPUT FILE(S) 15 CREATION DATE 09-SEP-1992 18:07

TENS(LBF.)	5000.0	0.0
SFLU(OHMM)	2000.0	2000.0
ILM(OHMM)	2000.0	2000.0
ILD(OHMM)	2000.0	2000.0
ILM(OHMM)	2000.0	2000.0





1/200

CP 32.6

FILE 21

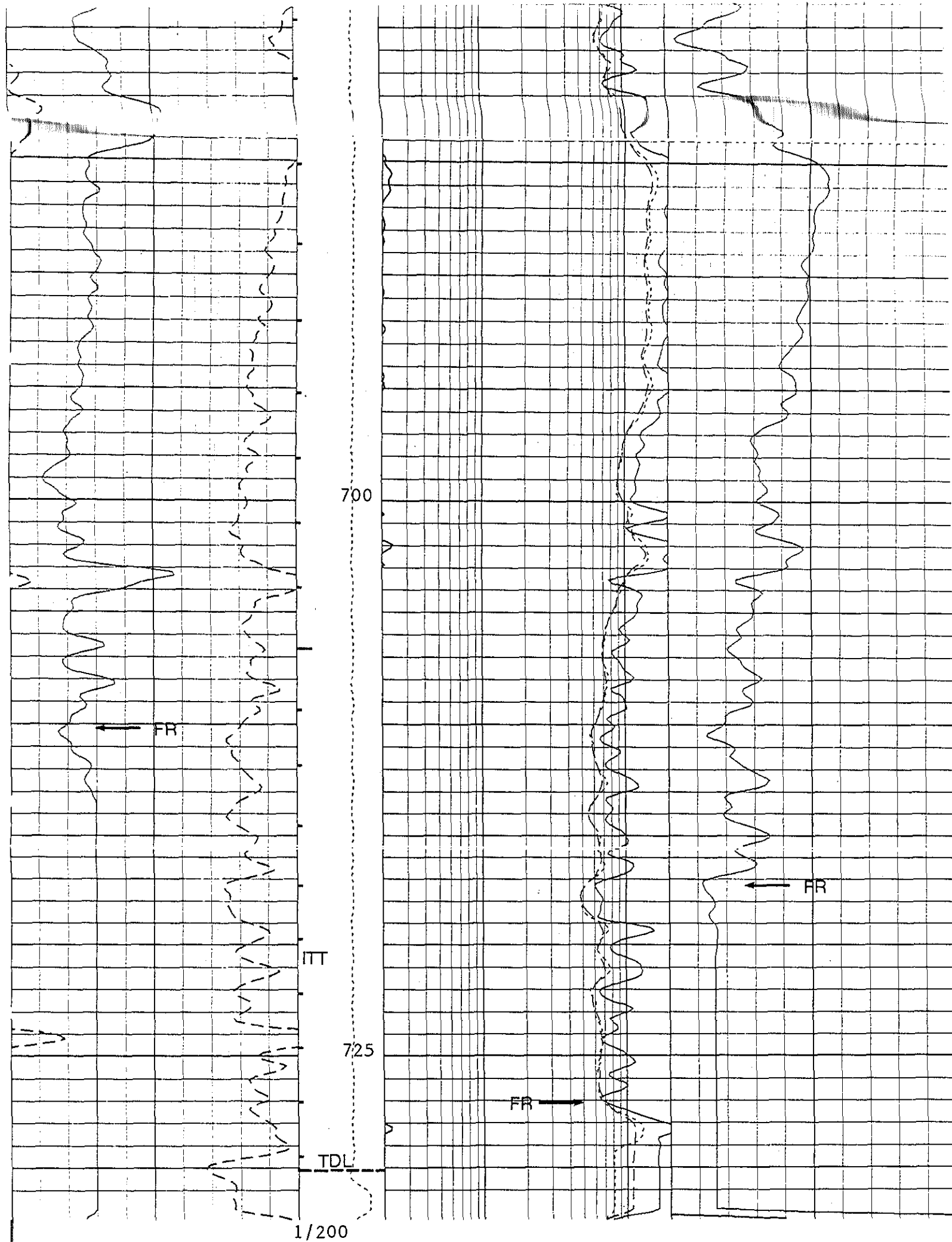
09-SEP-1992 19:58

INPUT FILE(S)  
15

CREATION DATE  
09-SEP-1992 18:07

		TENS(LBF.)							
		5000.0	0.0						
				SFLU(OHMM)					
				20.000		2000.0			
				JLM(OHMM)					
				20.000		2000.0			
				ILD(OHMM)					
				20.000		2000.0			
				ILM(OHMM)					
				.20000		20.000			
GR(GAPI)		150.00		SFLU(OHMM)					
0.0				.20000		20.000			
SP(MV )		20.000		ILD(OHMM)					
-80.00				.20000		20.000		140.00	40.000

SENSOR MEASURE POINT TO TOOL ZERO



CP 32.6

FILE 21

09-SEP-1992 19:58

INPUT FILE(S)  
15

CREATION DATE  
09-SEP-1992 18:07

GR(GAP)	TENS(LBF)	
	5000.0	0.0
	SFLU(OHMM)	
	20.000	2000.0
	ILM(OHMM)	
	20.000	2000.0
	ILD(OHMM)	
	20.000	2000.0
	ILM(OHMM)	
	20.000	20.000
	SFLU(OHMM)	