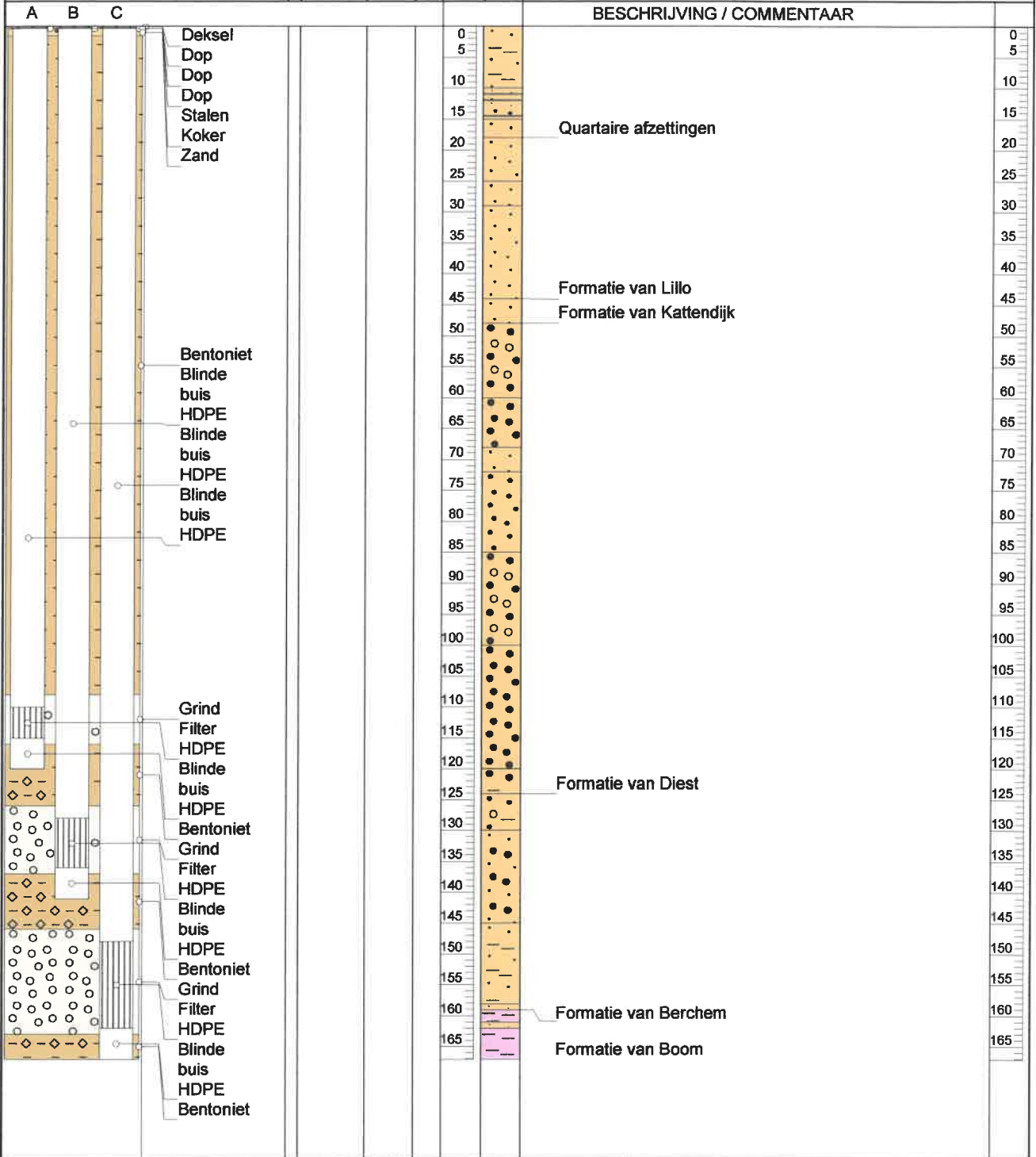


CONSTRUCTIE VAN DE BORING	STAAL	PID: BODEM LUCHT (ppm)	GRONDWATER	DIEPTE (m)	GEOLOGIE	Nr. VAN DE BORING: 2022-167		PAGINA 1 VAN 1
						GEBOORD VAN 08/04/2002 TOT 12/04/2002		
	BOORMETHODE : Kernboring (**), Zuigboring							
	BOORDER : Smet					DIAMETER BORING : 250 mm		
	BESCHRIJVING : AW					TYPE & DIAMETER FILTER : 63 mm		
	GECONTR. : NH					FILTEROPENINGEN : 0,5 mm		



LOCATIE / NOTITIES : (**) Kernboring: van 10 - 15 m-mv van 25 - 60 m-mv van 85 - 100 m-mv van 120 - 130 m-mv van 145 - 164 m-mv	LEGENDE ☒ Verstoord Staal ■ Niet-Verstoord Staal ▼ Grondwatertafel ▽ Hangende Waterspiegel
---	---

SEQUENCE LEGEND

- Dry matter (%)
- Organic matter (%)

BORING No. : 2022-167

PAGE 1 OF 1

DRILLED FROM 08/04/2002 TO 12/04/2002

DRILLING METHOD : Core Drilling (**), Wash Drilling

DRILLER : Smet

BORING DIAMETER : 250 mm

LOGGED BY : FC

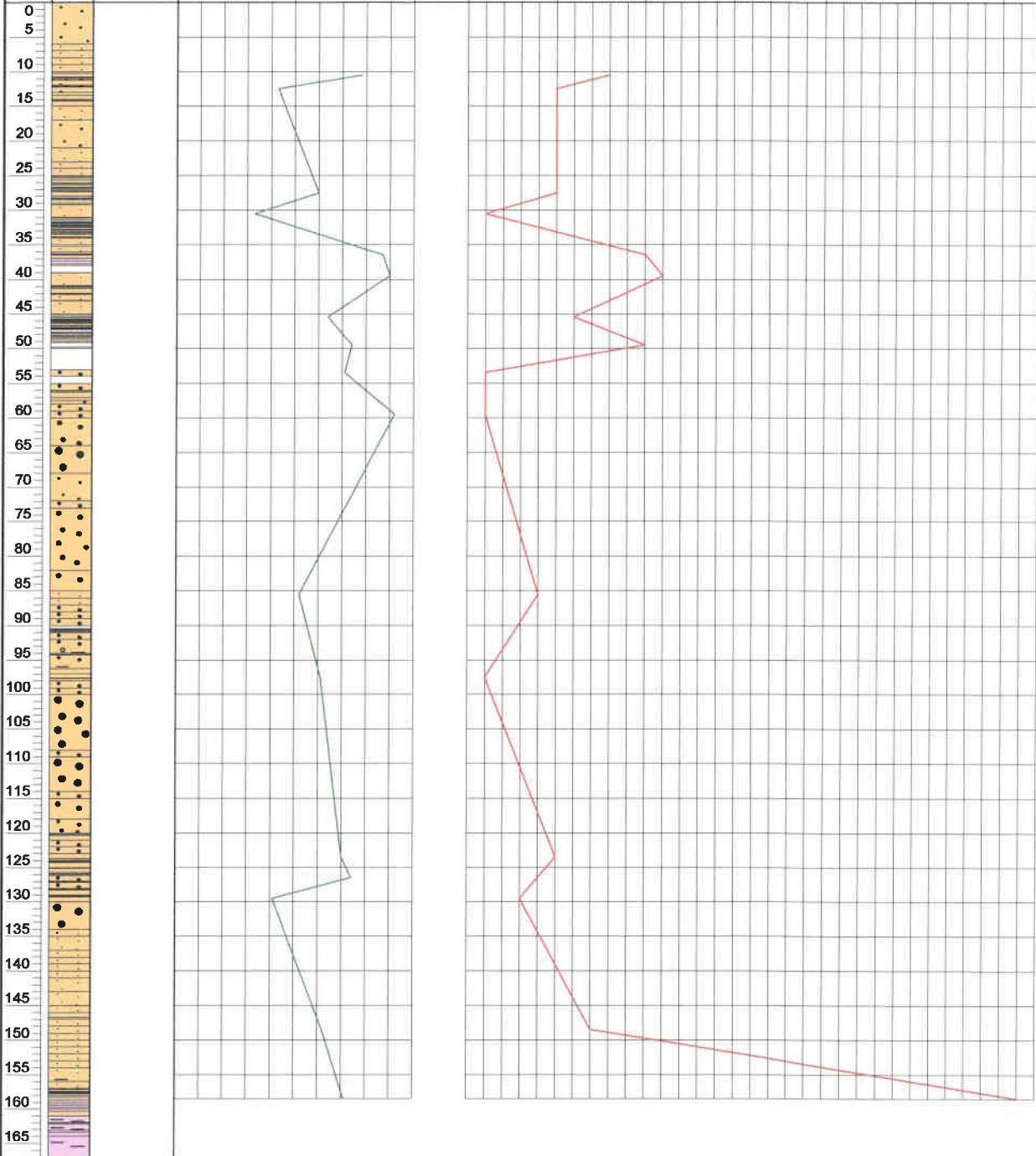
SCREEN DIAMETER : 63 mm

APP'D BY : GV

SCREEN SLOT SIZE :

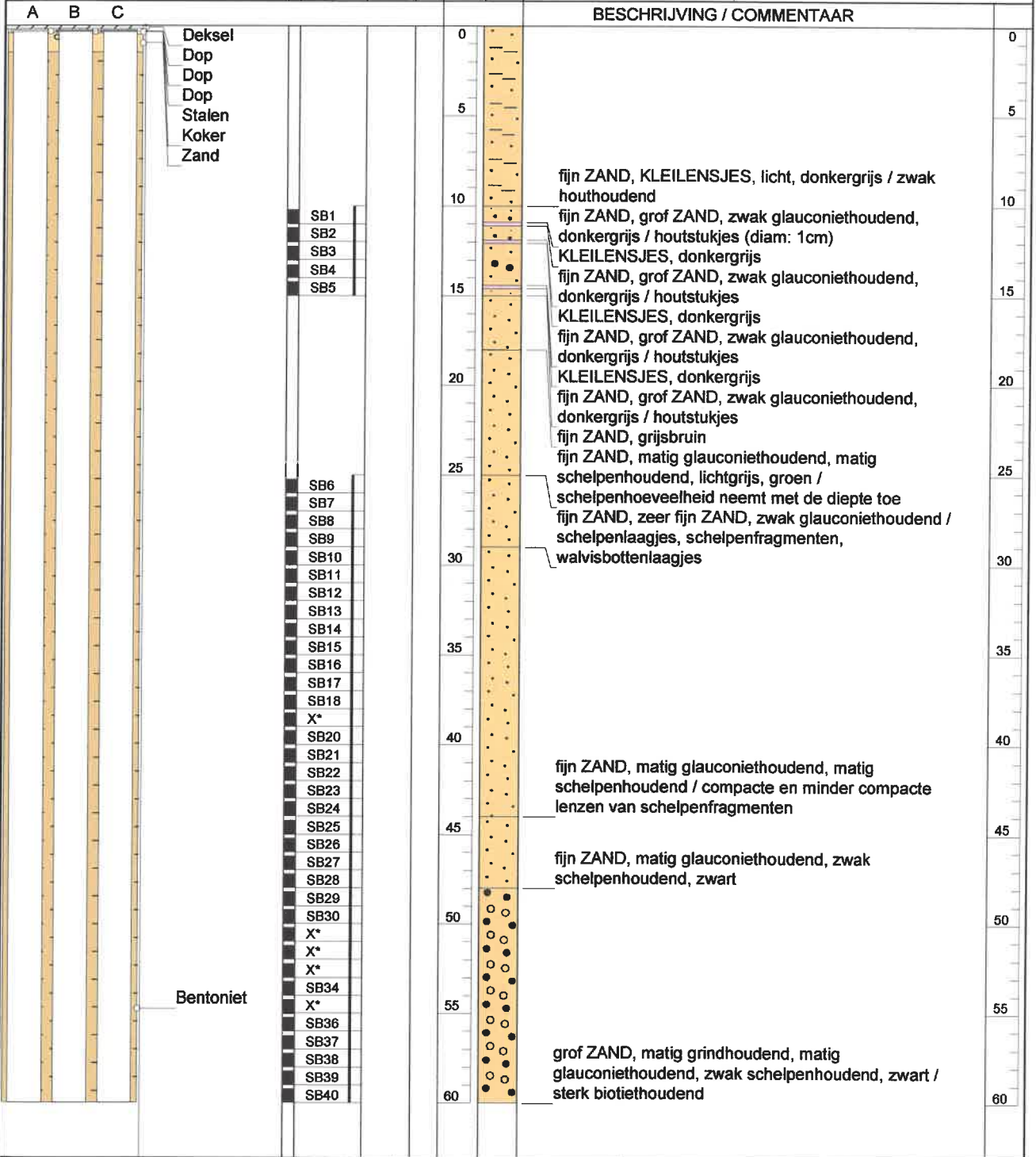
DEPTH (m)
GEOLOGY

75 80 85 0,0 0,5 1,0 1,5 2,0 2,5 3,0



LOCATION / NOTES :

CONSTRUCTIE VAN DE BORING	STAAL	PID: BODEM LUCHT (ppm)	GRONDWATER	DIEPTE (m)	GEOLOGIE	Nr. VAN DE BORING: 2022-167		PAGINA 1 VAN 3		
						GEBOORD VAN 08/04/2002 TOT 12/04/2002				
	BOORMETHODE : Kernboring (**), Zuigboring									
	BOORDER : Smet					DIAMETER BORING : 250 mm				
	BESCHRIJVING : AW					TYPE & DIAMETER FILTER : 63 mm				
	GECONTR. : NH					FILTEROPENINGEN : 0,5 mm				



LOCATIE / NOTITIES :

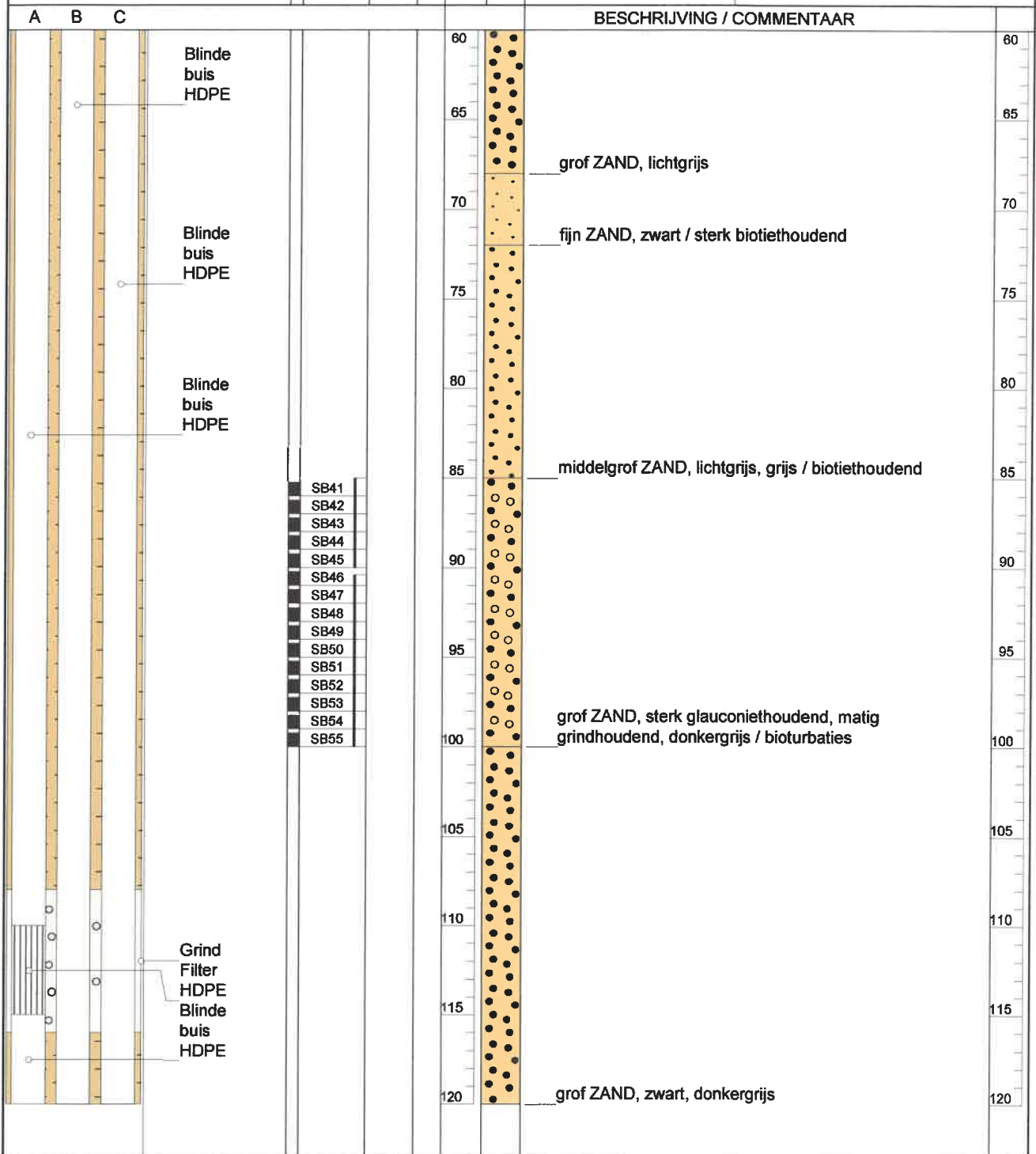
(**) Kernboring: van 10 - 15 m-mv
 van 25 - 60 m-mv
 van 85 - 100 m-mv
 van 120 - 130 m-mv
 van 145 - 164 m-mv

X*: Missing:
 Steekbus
 leeg

LEGENDE

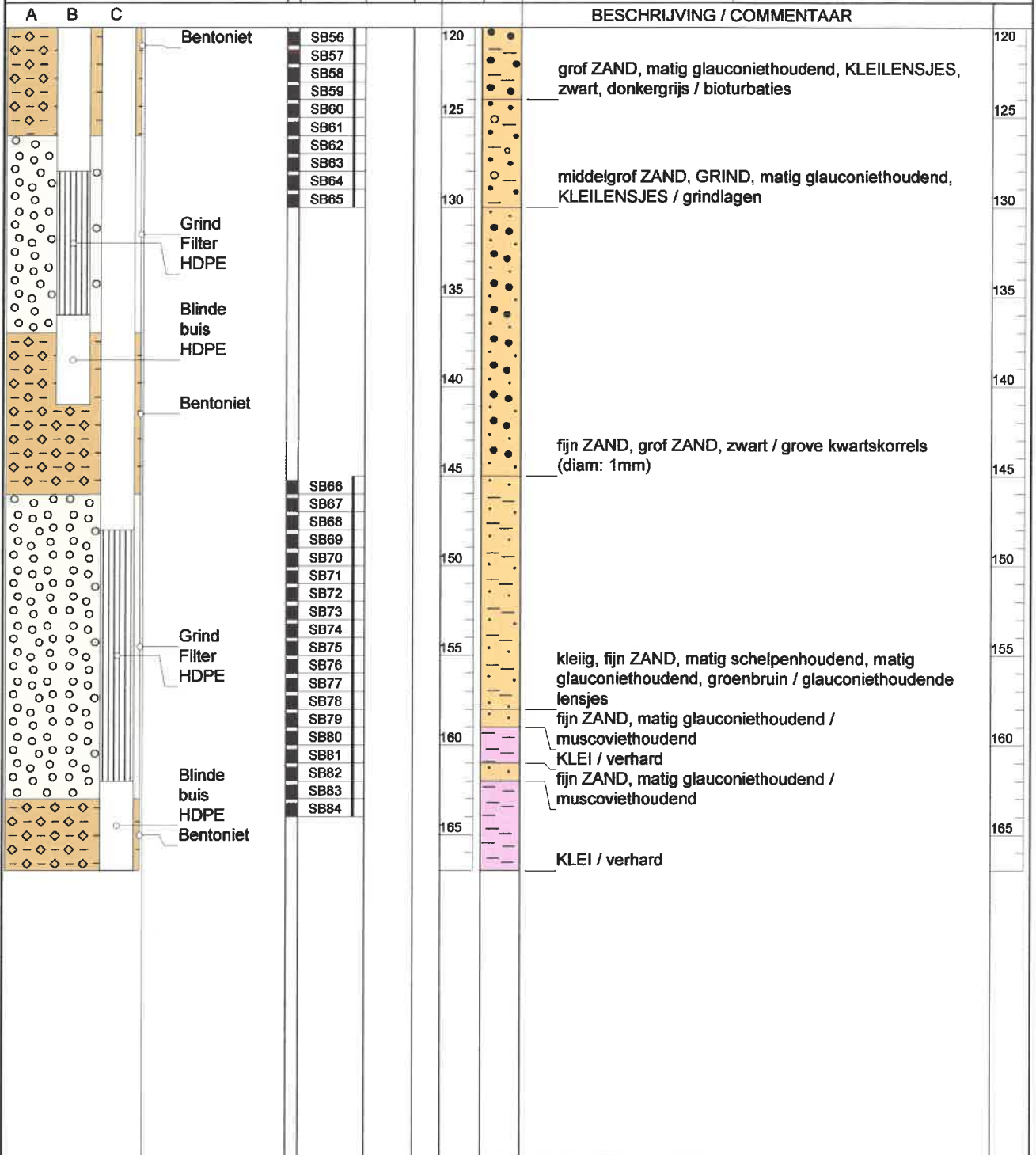
- ☒ Verstoord Staal
- Niet-Verstoord Staal
- ▼ Grondwatertafel
- ▽ Hangende Waterspiegel

CONSTRUCTIE VAN DE BORING	STAAL	PID: BODEM LUCHT (ppm)	GRONDWATER	DIEPTE (m)	GEOLOGIE	Nr. VAN DE BORING: 2022-167		PAGINA 2 VAN 3
						GEBOORD VAN 08/04/2002 TOT 12/04/2002		
	BOORMETHODE : Kernboring (**), Zuigboring							
	BOORDER : Smet					DIAMETER BORING : 250 mm		
	BESCHRIJVING : AW					TYPE & DIAMETER FILTER : 63 mm		
	GECONTR. : NH					FILTEROPENINGEN : 0,5 mm		



<p>LOCATIE / NOTITIES :</p> <p>(**) Kernboring: van 10 - 15 m-mv van 25 - 60 m-mv van 85 - 100 m-mv van 120 - 130 m-mv van 145 - 164 m-mv</p> <p>X*: Missing: Steekbus leeg</p>	<p>LEGENDE</p> <p>☒ Verstoord Staal</p> <p>■ Niet-Verstoord Staal</p> <p>▼ Grondwatertafel</p> <p>▽ Hangende Waterspiegel</p>
--	--

CONSTRUCTIE VAN DE BORING	STAAL NUMMER	PID: BODEM LUCHT (ppm)	GRONDWATER	DIEPTE (m)	GEOLOGIE	Nr. VAN DE BORING: 2022-167	PAGINA 3 VAN 3
						GEBOORD VAN 08/04/2002 TOT 12/04/2002	
	BOORMETHODE : Kernboring (**), Zuigboring						
	BOORDER : Smet	DIAMETER BORING : 250 mm					
	BESCHRIJVING : AW	TYPE & DIAMETER FILTER : 63 mm					
	GECONTR. : NH	FILTEROPENINGEN : 0,5 mm					

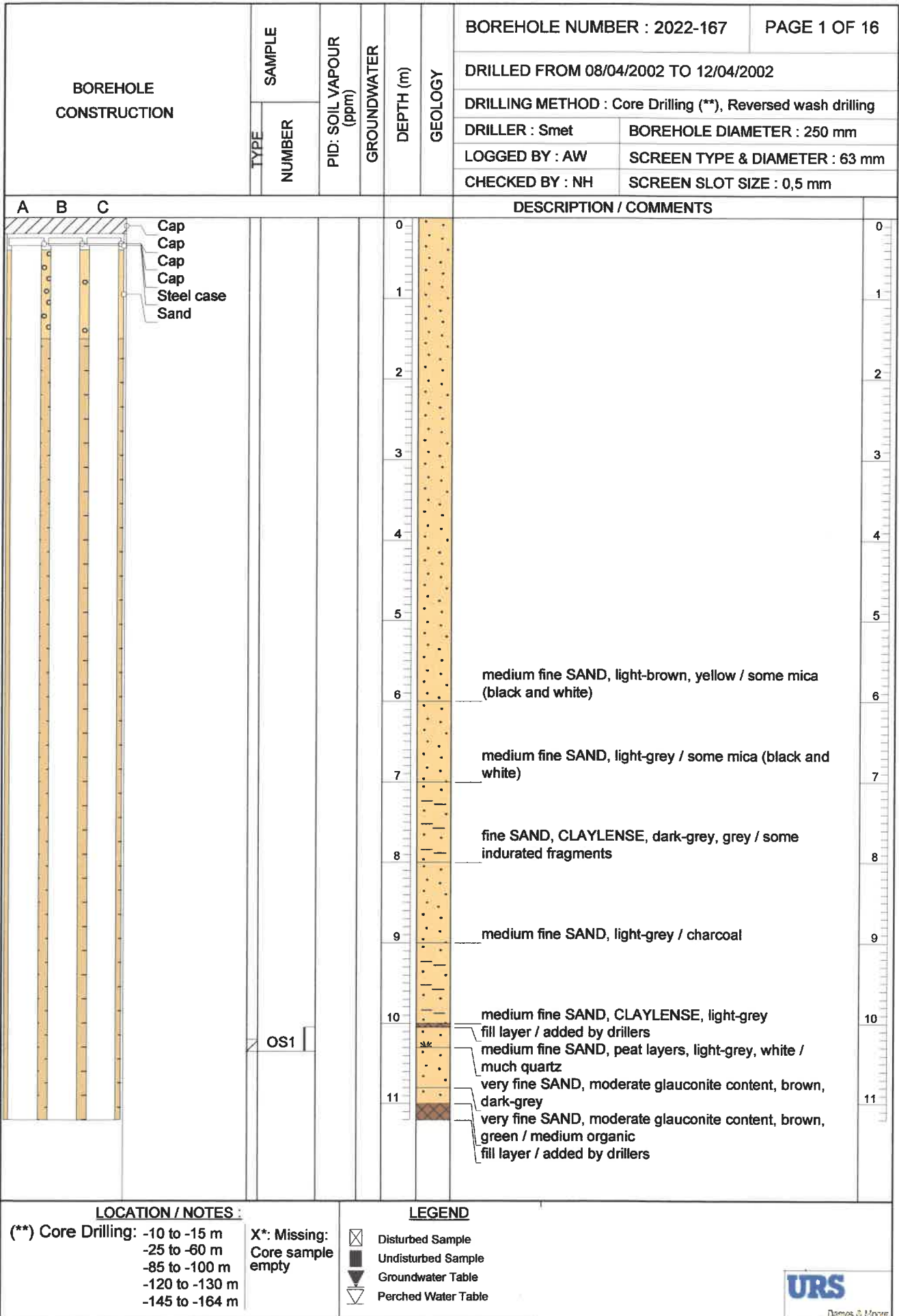


LOCATIE / NOTITIES :

(**) Kernboring: van 10 - 15 m-mv
 van 25 - 60 m-mv
 X*: Missing: van 85 - 100 m-mv
 Steekbus leeg van 120 - 130 m-mv
 van 145 - 164 m-mv

LEGENDE

- Verstoord Staal
- Niet-Verstoord Staal
- Grondwatertafel
- Hangende Waterspiegel



BOREHOLE CONSTRUCTION			SAMPLE NUMBER	PID: SOIL VAPOUR (ppm)	GROUNDWATER	DEPTH (m)	GEOLOGY	BOREHOLE NUMBER : 2022-167		PAGE 2 OF 16	
								DRILLED FROM 08/04/2002 TO 12/04/2002			
TYPE			DRILLER : Smet		BOREHOLE DIAMETER : 250 mm		LOGGED BY : AW		SCREEN TYPE & DIAMETER : 63 mm		
NUMBER			CHECKED BY : NH		SCREEN SLOT SIZE : 0,5 mm						
A	B	C	DESCRIPTION / COMMENTS								
			KL1			12	fine SAND, moderate glauconite content, dark-grey, black / with biotite and lighter and darker lenses fill layer / added by drillers				12
			OS2 AS1			13	fine SAND, dark-grey / very homogeneous medium SAND, CLAYLENSE, light-grey / some wood fragments (diam.=1 cm)				13
			KL2			14	fine SAND, dark-grey medium SAND, CLAYLENSE, light-grey CLAY, clayey SAND				14
			BD1			15	fine SAND, dark-grey / with biotite, bioturbations (yellow-brown), some wood fragments, black spots				15
						16					16
						17	fine SAND, grey-brown / with some muscovite and biotite				17
						18					18
						19					19
						20					20
						21	fine SAND, moderate glauconite content, brown-green / much biotite				21
						22					22
						23	fine SAND, moderate glauconite content, containing shells, light-grey, green				23

LOCATION / NOTES :

(**) Core Drilling: -10 to -15 m
 -25 to -60 m
 -85 to -100 m
 -120 to -130 m
 -145 to -164 m

X*: Missing:
 Core sample empty

- LEGEND**
- ☒ Disturbed Sample
 - Undisturbed Sample
 - ▼ Groundwater Table
 - ▽ Perched Water Table



BOREHOLE CONSTRUCTION		SAMPLE NUMBER	PID: SOIL VAPOUR (ppm)	GROUNDWATER	DEPTH (m)	GEOLOGY	BOREHOLE NUMBER : 2022-167		PAGE 4 OF 16		
							DRILLED FROM 08/04/2002 TO 12/04/2002				DRILLING METHOD : Core Drilling (**), Reversed wash drilling
A B C		TYPE	NUMBER	PID: SOIL VAPOUR (ppm)	GROUNDWATER	DEPTH (m)	GEOLOGY	DESCRIPTION / COMMENTS			
								DRILLER : Smet		BOREHOLE DIAMETER : 250 mm	
								LOGGED BY : AW		SCREEN TYPE & DIAMETER : 63 mm	
								CHECKED BY : NH		SCREEN SLOT SIZE : 0,5 mm	
						33		very fine SAND, small amount of shells / biotite GRAVEL, large amount of shells, very large glauconite content / some whale bones and glauconite fragments SAND, large glauconite content fine SAND, containing glauconite, medium amount of shells			33
			AS5			34		medium SAND GRAVEL, large amount of shells fine SAND, large glauconite content, large amount of shells			34
			KL5			35		clayey SAND, large amount of shells, grey very fine SAND, containing shells, dark-grey GRAVEL, SANDSTONE, large amount of shells clayey SAND, containing shells, dark-grey / coarse shell fragments, whale bones			35
			BD3			36		clayey SAND, containing shells, dark-grey fine SAND, containing shells, dark-grey GRAVEL, large amount of shells / coarse broken shells fine SAND, containing shells, dark-grey / some biotite			36
			KL6			37		CLAY, large amount of shells / coarse shell fragments, very homogeneous, large porosity clayey SAND, containing shells clayey SAND, dark-grey / indurated clayey, fine SAND, containing shells, dark-grey / homogeneous			37
			OS5			38		CLAY, large amount of shells / coarse shell fragments, very homogeneous, large porosity sandy CLAY, large amount of shells, dark-grey fine SAND, large amount of shells, black / compacted			38
						39		/ no sample, probably loose shells			39
			OS6 AS6			40					40
			KL7			41		fine SAND, black / very organic, much biotite clayey SAND, large glauconite content, green, brown-green / package shell fragments sandy CLAY, large amount of shells			41
						42		medium fine SAND, black / very organic, much biotite / shell package sandy CLAY, large glauconite content, large amount of shells			42
			BD4			43		fine SAND, small glauconite content, black / shell package			43

LOCATION / NOTES :

(**) Core Drilling: -10 to -15 m
 -25 to -60 m
 -85 to -100 m
 -120 to -130 m
 -145 to -164 m

X*: Missing:
 Core sample empty

LEGEND

- ☒ Disturbed Sample
- Undisturbed Sample
- ▼ Groundwater Table
- ▽ Perched Water Table

**BOREHOLE
CONSTRUCTION**

SAMPLE
NUMBER

PID: SOIL VAPOUR
(ppm)

GROUNDWATER

DEPTH (m)

GEOLOGY

BOREHOLE NUMBER : 2022-167

PAGE 5 OF 16

DRILLED FROM 08/04/2002 TO 12/04/2002

DRILLING METHOD : Core Drilling (**), Reversed wash drilling

DRILLER : Smet

BOREHOLE DIAMETER : 250 mm

LOGGED BY : AW

SCREEN TYPE & DIAMETER : 63 mm

CHECKED BY : NH

SCREEN SLOT SIZE : 0,5 mm

A B C

DESCRIPTION / COMMENTS

AS7

44

44

45

45

46

46

47

47

48

48

AS8

49

49

AS9

KL8

OS7

50

50

51

51

52

52

53

53

AS10

KL9

OS8

54

54

55

55

Bentonite

LOCATION / NOTES :

(**) Core Drilling: -10 to -15 m
-25 to -60 m
-85 to -100 m
-120 to -130 m
-145 to -164 m

X*: Missing:
Core sample
empty

- LEGEND**
- ☒ Disturbed Sample
 - Undisturbed Sample
 - ▼ Groundwater Table
 - ▽ Perched Water Table

URS

Dames & Moore

BOREHOLE CONSTRUCTION			SAMPLE NUMBER	PID: SOIL VAPOUR (ppm)	GROUNDWATER	DEPTH (m)	GEOLOGY	BOREHOLE NUMBER : 2022-167		PAGE 6 OF 16		
								DRILLED FROM 08/04/2002 TO 12/04/2002				DRILLING METHOD : Core Drilling (**), Reversed wash drilling
A B C			TYPE	NUMBER	PID: SOIL VAPOUR (ppm)	GROUNDWATER	DEPTH (m)	GEOLOGY	DESCRIPTION / COMMENTS			
									DRILLER : Smet		BOREHOLE DIAMETER : 250 mm	
									LOGGED BY : AW		SCREEN TYPE & DIAMETER : 63 mm	
			CHECKED BY : NH		SCREEN SLOT SIZE : 0,5 mm							
						55					55	
						56					56	
						57					57	
						58					58	
						59					59	
						60					60	
						61					61	
						62					62	
						63					63	
						64					64	

LOCATION / NOTES :
 (**) Core Drilling: -10 to -15 m
 -25 to -60 m
 -85 to -100 m
 -120 to -130 m
 -145 to -164 m

LEGEND

X*: Missing: Core sample empty

☒ Disturbed Sample

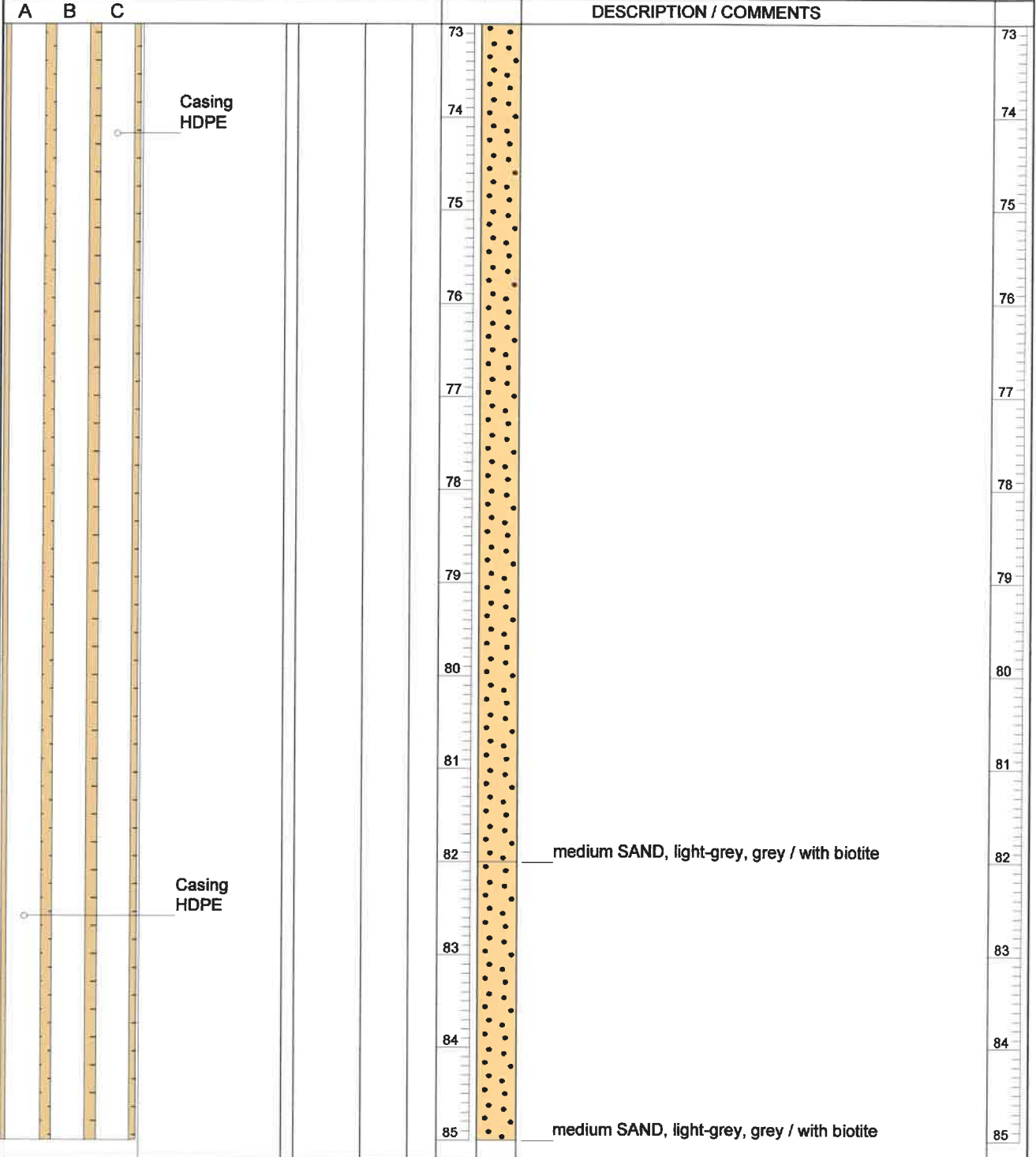
■ Undisturbed Sample

▼ Groundwater Table

▽ Perched Water Table




BOREHOLE CONSTRUCTION	SAMPLE	PID: SOIL VAPOUR (ppm)	GROUNDWATER	DEPTH (m)	GEOLOGY	BOREHOLE NUMBER : 2022-167		PAGE 8 OF 16		
						DRILLED FROM 08/04/2002 TO 12/04/2002				
	DRILLING METHOD : Core Drilling (**), Reversed wash drilling									
	DRILLER : Smet					BOREHOLE DIAMETER : 250 mm				
	LOGGED BY : AW					SCREEN TYPE & DIAMETER : 63 mm				
	CHECKED BY : NH					SCREEN SLOT SIZE : 0,5 mm				



LOCATION / NOTES : (**) Core Drilling: -10 to -15 m -25 to -60 m -85 to -100 m -120 to -130 m -145 to -164 m	X*: Missing: Core sample empty	LEGEND ☒ Disturbed Sample ■ Undisturbed Sample ▼ Groundwater Table ▽ Perched Water Table
--	---	---



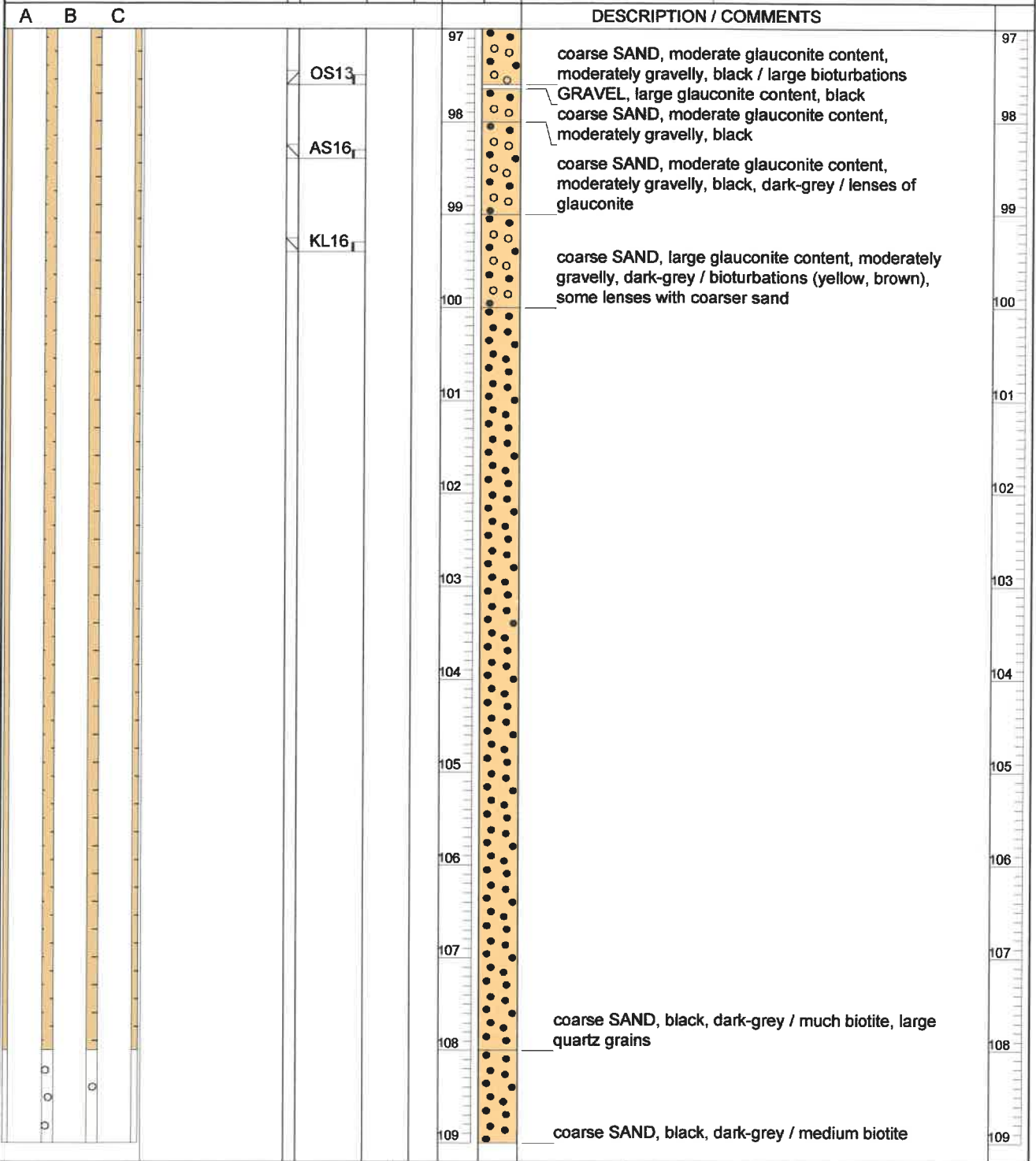
BOREHOLE CONSTRUCTION		SAMPLE NUMBER	PID: SOIL VAPOUR (ppm)	GROUNDWATER	DEPTH (m)	GEOLOGY	BOREHOLE NUMBER : 2022-167		PAGE 7 OF 16				
							DRILLED FROM 08/04/2002 TO 12/04/2002				DRILLING METHOD : Core Drilling (**), Reversed wash drilling		
TYPE		NUMBER		PID: SOIL VAPOUR (ppm)		GROUNDWATER		DEPTH (m)		GEOLOGY			
A		B		C		Casing HDPE							
							DESCRIPTION / COMMENTS						
							64						64
							65						65
							66						66
							67						67
							68	coarse SAND, light-grey, white / with biotite					68
							69						69
							70						70
							71						71
							72	fine SAND, grey / much biotite					72
							73	medium SAND, light-grey, grey / with biotite					73
LOCATION / NOTES : (**) Core Drilling: -10 to -15 m -25 to -60 m -85 to -100 m -120 to -130 m -145 to -164 m							LEGEND ☒ Disturbed Sample ■ Undisturbed Sample ▼ Groundwater Table ▽ Perched Water Table					 URS Design & Monitor	

	A	B	C						DESCRIPTION / COMMENTS	
				85						85
					86				medium fine SAND, small amount of shells, black / much biotite, iron traces	86
					87				medium fine SAND, small amount of shells, black / much biotite, bioturbations (yellow, brown)	87
					88				medium SAND, slightly gravelly, small glauconite content, black / much biotite	88
					89				coarse SAND, large glauconite content, CLAYLENSE, black / highly bioturbated (dark gray)	89
					90				coarse SAND, CLAYLENSE, moderate glauconite content, moderately gravelly, black / highly bioturbated	90
					91				SANDSTONE coarse SAND, large glauconite content, moderately gravelly, dark-grey-green coarse SAND, black	91
					92				coarse SAND, large glauconite content, moderately gravelly, SANDSTONE, dark-grey GRAVEL, SAND, moderate glauconite content coarse SAND, large glauconite content, moderately gravelly, dark-grey-green GRAVEL, clayey SAND, moderate glauconite content	92
					93				coarse SAND, large glauconite content, moderately gravelly, dark-grey-green coarse SAND, black / much biotite, some bioturbations	93
					94				coarse SAND, moderately gravelly, moderate glauconite content, CLAYLENSE, black / much biotite, some bioturbations (dark gray) coarse SAND, moderate glauconite content, CLAYLENSE, black / traces of bioturbations GRAVEL, large amount of shells	94
					95					95
					96				coarse SAND, moderate glauconite content, CLAYLENSE, black / traces of bioturbations GRAVEL, black	96
					97				coarse SAND, moderate glauconite content, CLAYLENSE, black / traces of bioturbations	97

LOCATION / NOTES : (**) Core Drilling: -10 to -15 m -25 to -60 m -85 to -100 m -120 to -130 m -145 to -164 m	X*: Missing: Core sample empty	LEGEND Disturbed Sample Undisturbed Sample Groundwater Table Perched Water Table
--	-----------------------------------	---



BOREHOLE CONSTRUCTION	SAMPLE NUMBER	PID: SOIL VAPOUR (ppm)	GROUNDWATER	DEPTH (m)	GEOLOGY	BOREHOLE NUMBER : 2022-167		PAGE 10 OF 16
						DRILLED FROM 08/04/2002 TO 12/04/2002		
	DRILLING METHOD : Core Drilling (**), Reversed wash drilling							
	DRILLER : Smet					BOREHOLE DIAMETER : 250 mm		
	LOGGED BY : AW					SCREEN TYPE & DIAMETER : 63 mm		
	CHECKED BY : NH					SCREEN SLOT SIZE : 0,5 mm		



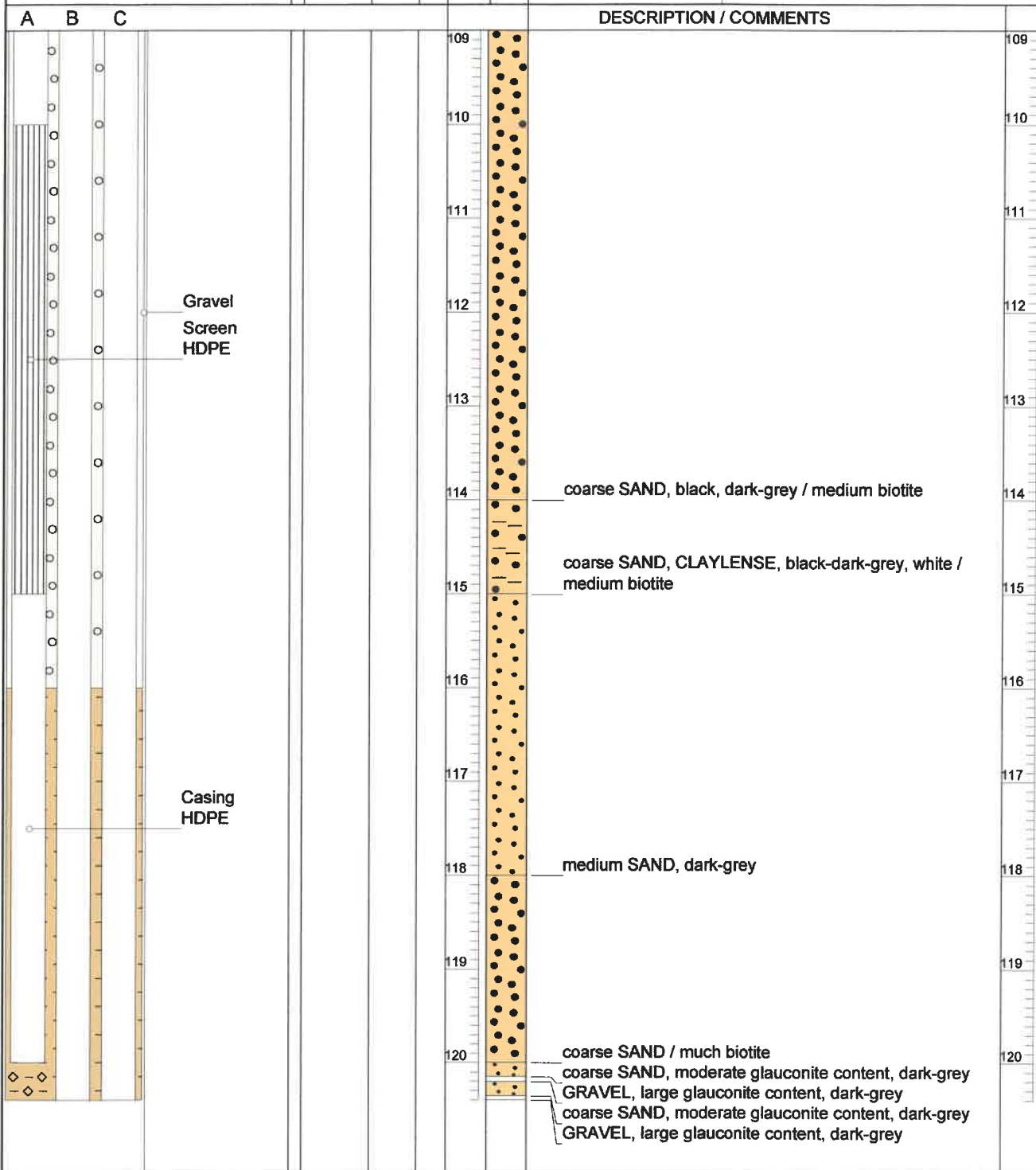
LOCATION / NOTES : (**) Core Drilling: -10 to -15 m -25 to -60 m -85 to -100 m -120 to -130 m -145 to -164 m	LEGEND ☒ Disturbed Sample ● Undisturbed Sample ▼ Groundwater Table ▽ Perched Water Table	X*: Missing: Core sample empty
--	---	--



BOREHOLE CONSTRUCTION

TYPE	SAMPLE NUMBER	PID: SOIL VAPOUR (ppm)	GROUNDWATER	DEPTH (m)	GEOLOGY

DRILLED FROM 08/04/2002 TO 12/04/2002
 DRILLING METHOD : Core Drilling (**), Reversed wash drilling
 DRILLER : Smet BOREHOLE DIAMETER : 250 mm
 LOGGED BY : AW SCREEN TYPE & DIAMETER : 63 mm
 CHECKED BY : NH SCREEN SLOT SIZE : 0,5 mm



LOCATION / NOTES :

(**) Core Drilling: -10 to -15 m
 -25 to -60 m
 -85 to -100 m
 -120 to -130 m
 -145 to -164 m

X*: Missing:
 Core sample empty

LEGEND

- ⊠ Disturbed Sample
- Undisturbed Sample
- ▼ Groundwater Table
- ▽ Perched Water Table

BOREHOLE CONSTRUCTION		SAMPLE NUMBER	PID: SOIL VAPOUR (ppm)	GROUNDWATER	DEPTH (m)	GEOLOGY	BOREHOLE NUMBER : 2022-167		PAGE 12 OF 16		
							DRILLED FROM 08/04/2002 TO 12/04/2002				DRILLING METHOD : Core Drilling (**), Reversed wash drilling
A B C		TYPE	NUMBER	PID: SOIL VAPOUR (ppm)	GROUNDWATER	DEPTH (m)	GEOLOGY	DESCRIPTION / COMMENTS			
								DRILLER : Smet		BOREHOLE DIAMETER : 250 mm	
								LOGGED BY : AW		SCREEN TYPE & DIAMETER : 63 mm	
								CHECKED BY : NH		SCREEN SLOT SIZE : 0,5 mm	
			AS17			121	coarse SAND, moderate glauconite content, dark-grey / many bioturbations (yellow, brown)				
			KL17			122	coarse SAND, large glauconite content, dark-grey / bioturbations, iron traces (red-brown)				
			BD8			123	coarse SAND, large glauconite content, moderately gravelly, black, dark-grey / lenses coarser sand, bioturbations (yellow, brown)				
			OS14			124	coarse SAND, CLAYLENSE, moderate glauconite content, black, dark-grey / biotite, bioturbations				
			AS18			124	coarse SAND, large glauconite content, green-black fill layer / added by drillers				
			KL18			125	coarse SAND, moderate glauconite content, black / bioturbations (brown, yellow) CLAY, brown / endurated				
			OS15			126	coarse SAND, moderate glauconite content, black / bioturbations (yellow, brown) CLAY, moderate glauconite content CLAY, brown				
			KL19			127	coarse SAND, moderate glauconite content, black / bioturbations (yellow, brown) CLAY, moderate glauconite content				
			OS16			128	medium SAND, moderate glauconite content, CLAYLENSE, black / bioturbations fill layer / added by drillers				
						128	coarse SAND, moderate glauconite content, black / bioturbations (yellow, brown) fill layer / added by drillers				
						129	medium SAND, moderate glauconite content, dark-grey / many bioturbations fill layer / added by drillers				
						130	medium SAND, moderate glauconite content, black / bioturbations GRAVEL				
						130	medium SAND, moderate glauconite content, black / bioturbations				

LOCATION / NOTES :

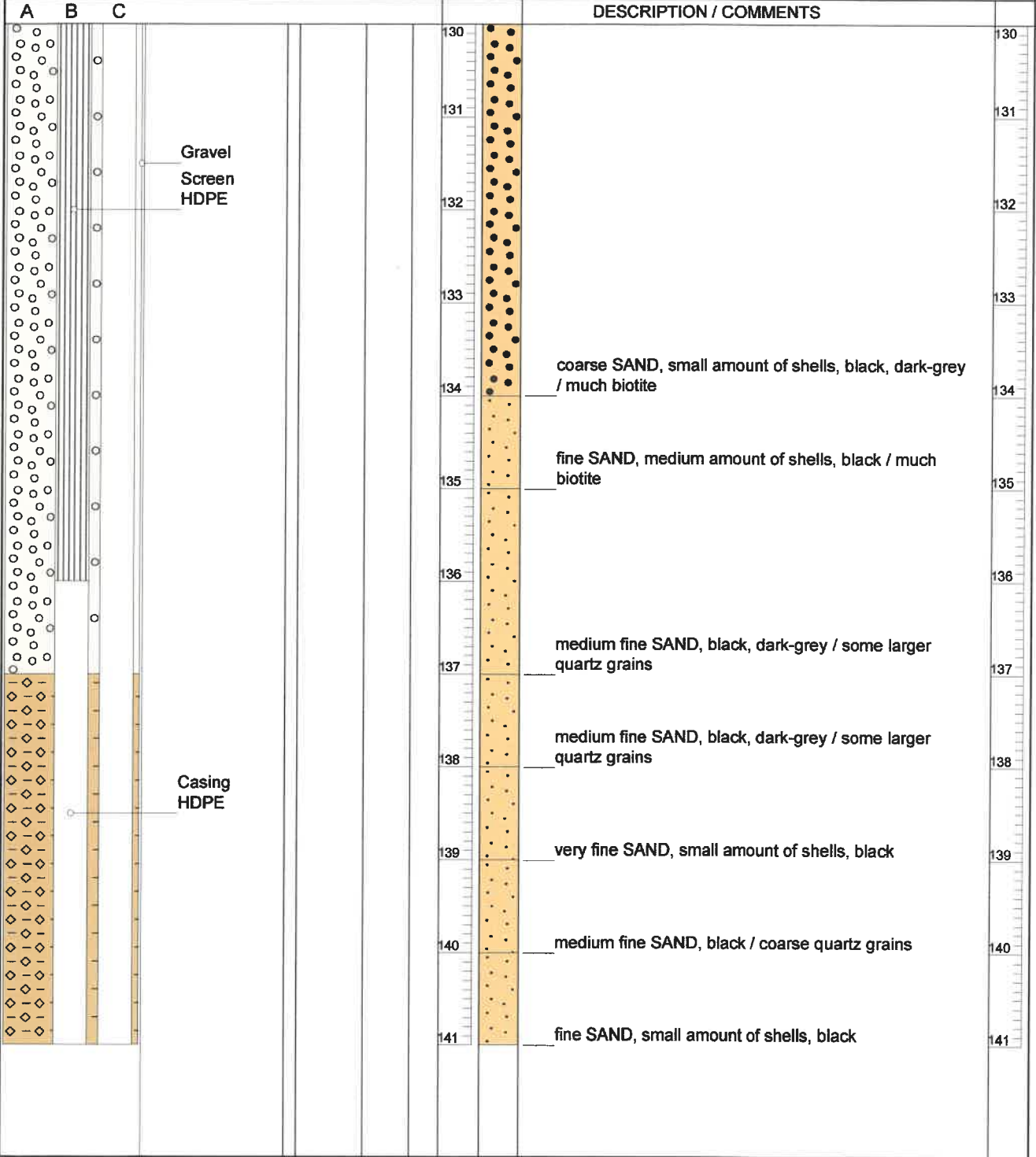
(**) Core Drilling: -10 to -15 m
 -25 to -60 m
 -85 to -100 m
 -120 to -130 m
 -145 to -164 m

X*: Missing: Core sample empty

LEGEND

- ☒ Disturbed Sample
- Undisturbed Sample
- ▼ Groundwater Table
- ▽ Perched Water Table

BOREHOLE CONSTRUCTION	SAMPLE NUMBER	PID: SOIL VAPOUR (ppm)	GROUNDWATER	DEPTH (m)	GEOLOGY	BOREHOLE NUMBER : 2022-167		PAGE 13 OF 16	
						DRILLED FROM 08/04/2002 TO 12/04/2002			
	DRILLING METHOD : Core Drilling (**), Reversed wash drilling						DRILLER : Smet		BOREHOLE DIAMETER : 250 mm
	LOGGED BY : AW						SCREEN TYPE & DIAMETER : 63 mm		
	CHECKED BY : NH						SCREEN SLOT SIZE : 0,5 mm		



LOCATION / NOTES :		LEGEND	
(**) Core Drilling: -10 to -15 m -25 to -60 m -85 to -100 m -120 to -130 m -145 to -164 m		X*: Missing: Core sample empty Disturbed Sample Undisturbed Sample Groundwater Table Perched Water Table	

BOREHOLE CONSTRUCTION		SAMPLE NUMBER	PID: SOIL VAPOUR (ppm)	GROUNDWATER	DEPTH (m)	GEOLOGY	BOREHOLE NUMBER : 2022-167		PAGE 14 OF 16		
							DRILLED FROM 08/04/2002 TO 12/04/2002				DRILLING METHOD : Core Drilling (**), Reversed wash drilling
A B C		TYPE	NUMBER	PID: SOIL VAPOUR (ppm)	GROUNDWATER	DEPTH (m)	GEOLOGY	DESCRIPTION / COMMENTS			
								DRILLER : Smet		BOREHOLE DIAMETER : 250 mm	
								LOGGED BY : AW		SCREEN TYPE & DIAMETER : 63 mm	
								CHECKED BY : NH		SCREEN SLOT SIZE : 0,5 mm	
Bentonite						141					141
						142					142
						143					143
						144					144
						145					145
			AS19			146					146
			BD9			147					147
			KL20			148					148
			OS17			149					149
						150					150
			AS20			151					151
			KL21			152					152
						153					153
			OS18								

LOCATION / NOTES :
 (**) Core Drilling: -10 to -15 m
 -25 to -60 m
 -85 to -100 m
 -120 to -130 m
 -145 to -164 m

LEGEND

X*: Missing: Core sample empty

☒ Disturbed Sample

■ Undisturbed Sample

▼ Groundwater Table

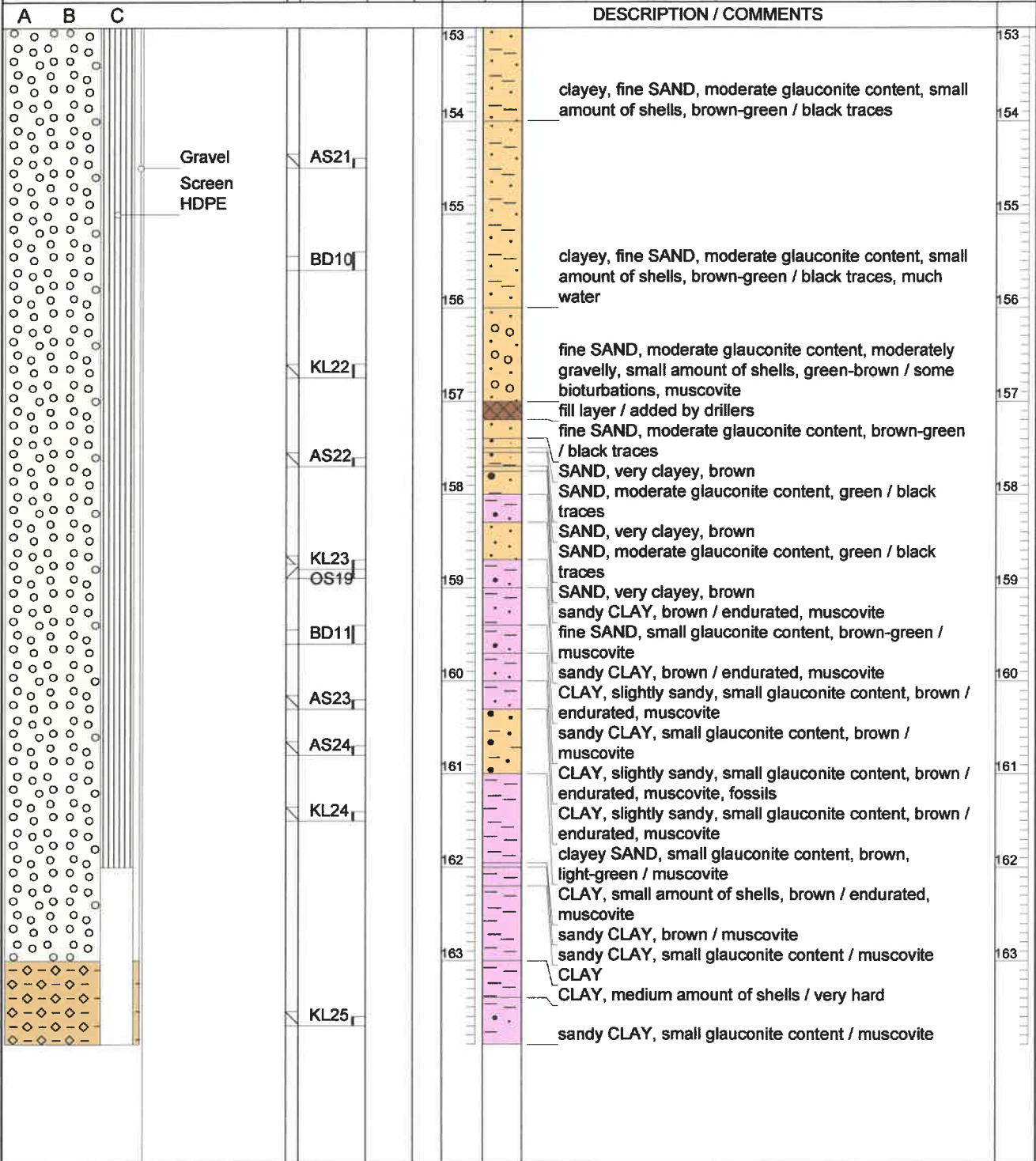
▽ Perched Water Table



BOREHOLE CONSTRUCTION

TYPE	SAMPLE NUMBER	PID: SOIL VAPOUR (ppm)	GROUNDWATER	DEPTH (m)	GEOLOGY
	NUMBER				

DRILLED FROM 08/04/2002 TO 12/04/2002
 DRILLING METHOD : Core Drilling (**), Reversed wash drilling
 DRILLER : Smet BOREHOLE DIAMETER : 250 mm
 LOGGED BY : AW SCREEN TYPE & DIAMETER : 63 mm
 CHECKED BY : NH SCREEN SLOT SIZE : 0,5 mm



LOCATION / NOTES :

(**) Core Drilling: -10 to -15 m
 -25 to -60 m
 -85 to -100 m
 -120 to -130 m
 -145 to -164 m

X*: Missing: Core sample empty

LEGEND

- ⊠ Disturbed Sample
- Undisturbed Sample
- ▼ Groundwater Table
- ▽ Perched Water Table



BOREHOLE CONSTRUCTION		SAMPLE		PID: SOIL VAPOUR (ppm)	GROUNDWATER	DEPTH (m)	GEOLOGY	BOREHOLE NUMBER : 2022-167		PAGE 16 OF 16		
		TYPE	NUMBER					DRILLED FROM 08/04/2002 TO 12/04/2002				
								DRILLING METHOD : Core Drilling (**), Reversed wash drilling				
								DRILLER : Smet		BOREHOLE DIAMETER : 250 mm		
								LOGGED BY : AW		SCREEN TYPE & DIAMETER : 63 mm		
								CHECKED BY : NH		SCREEN SLOT SIZE : 0,5 mm		
A	B	C						DESCRIPTION / COMMENTS				
<p>Casing HDPE</p> <p>Bentonite</p>												
						164					164	
						165					165	
						166					166	
						167			CLAY, medium amount of shells / very hard		167	

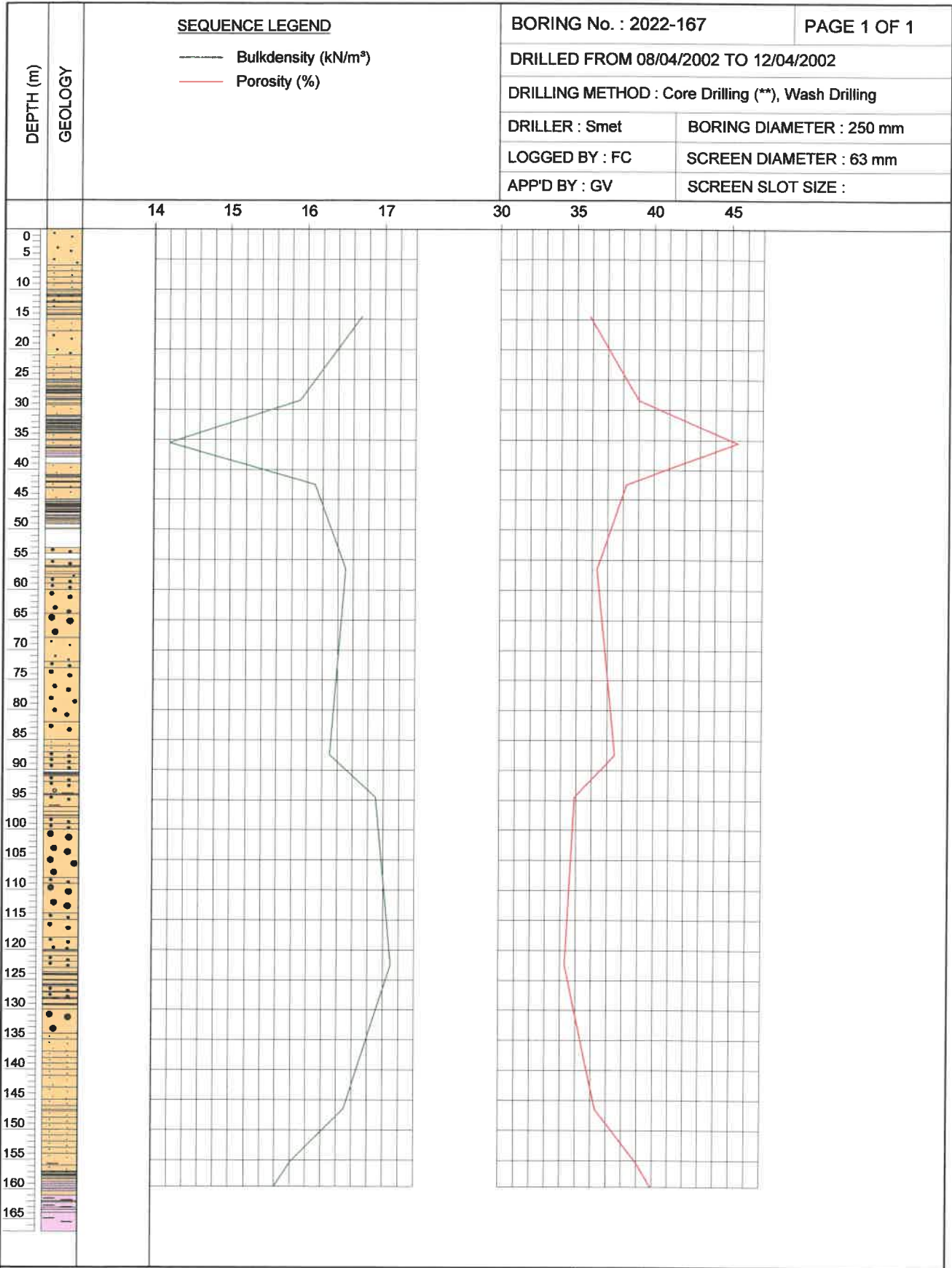
LOCATION / NOTES :
 (**) Core Drilling: -10 to -15 m
 -25 to -60 m
 -85 to -100 m
 -120 to -130 m
 -145 to -164 m

X*: Missing:
 Core sample empty

LEGEND

- Disturbed Sample
- Undisturbed Sample
- Groundwater Table
- Perched Water Table





LOCATION / NOTES :

SEQUENCE LEGEND

- Grain size D10 (µm)
- Grain size D50 (µm)
- Grain size D90 (µm)
- Permeability (m/d)

BORING No. : 2022-167

PAGE 1 OF 1

DRILLED FROM 08/04/2002 TO 12/04/2002

DRILLING METHOD : Core Drilling (**), Wash Drilling

DRILLER : Smet

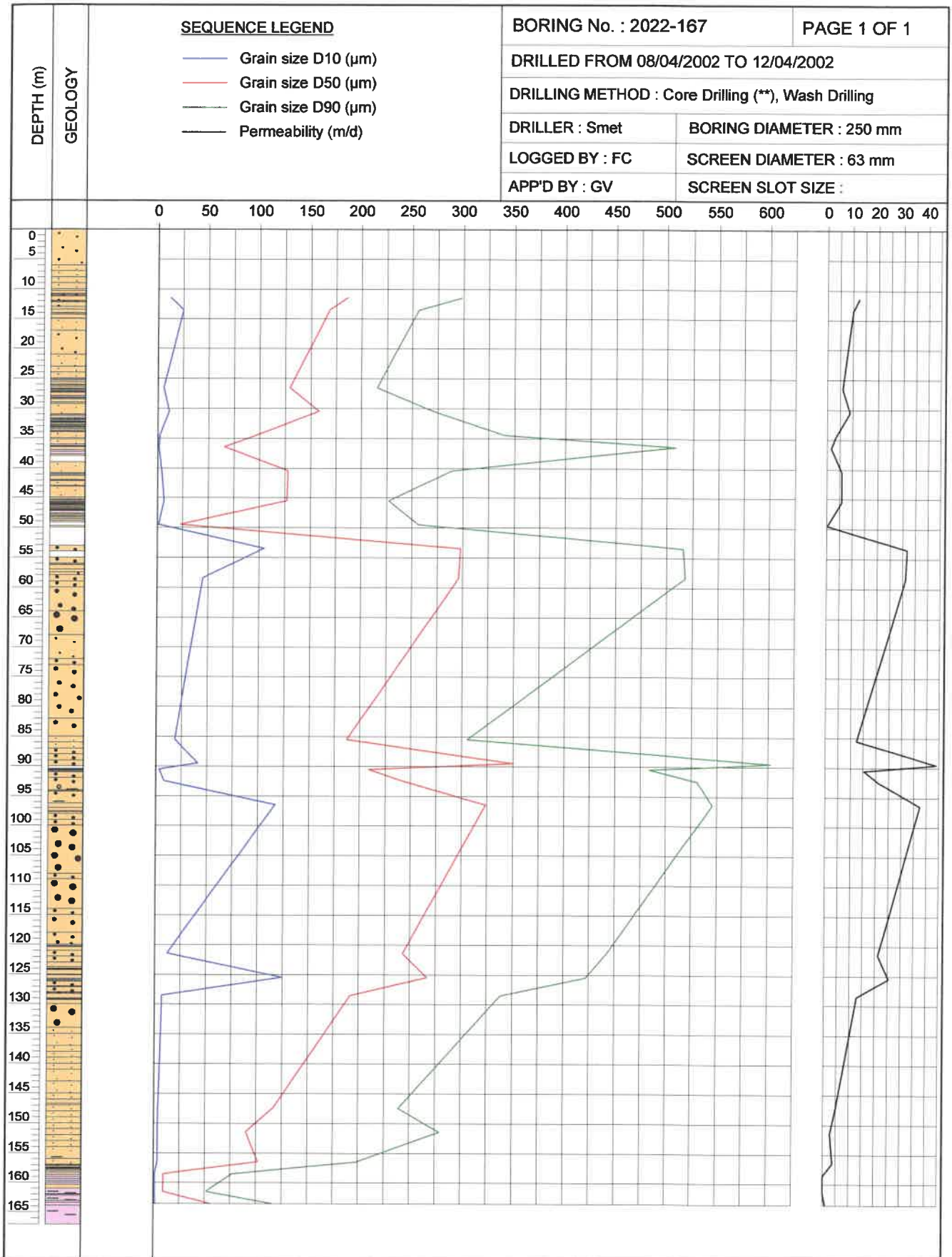
BORING DIAMETER : 250 mm

LOGGED BY : FC

SCREEN DIAMETER : 63 mm

APP'D BY : GV

SCREEN SLOT SIZE :



LOCATION / NOTES :